



Anerley Hill SE19  
Guide Price £385,000-£400,000

0208 702 9333  
[pedderproperty.com](http://pedderproperty.com)

**pedder**







# In general

- A share of the freehold
- Two double bedrooms
- Close to CP station and the park
- Communal Garden
- Period maisonette

# In detail

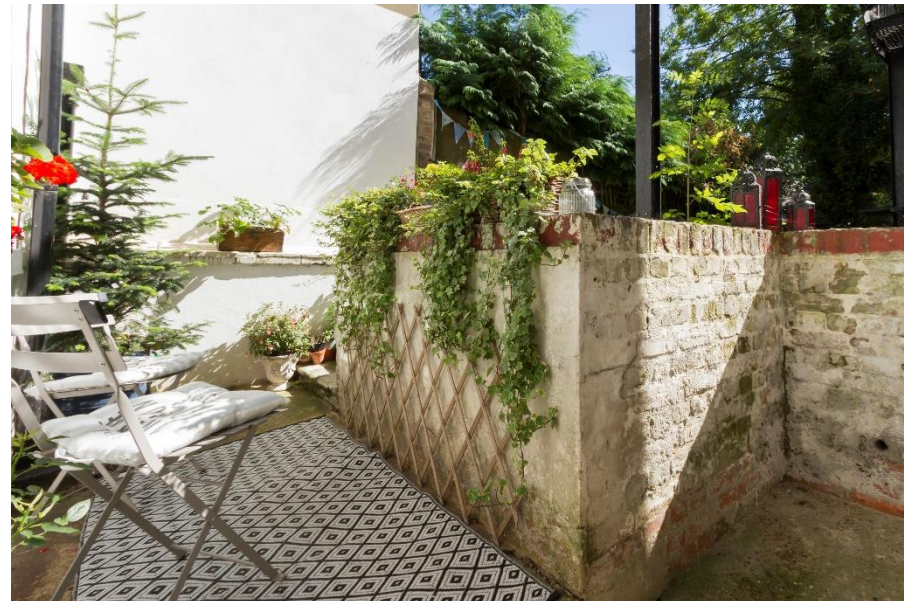
An Impressive two bedroom period conversion centrally positioned for Crystal Palace station available for sale with no onward chain.

This property offers a share of freehold, separate kitchen, modern bathroom and ample storage.

Further benefits include own front door and access to lovely communal gardens.

This location is perfect for transport links, opposite Crystal Palace Park and well placed for all of the shopping and leisure facilities that the Triangle has to offer.

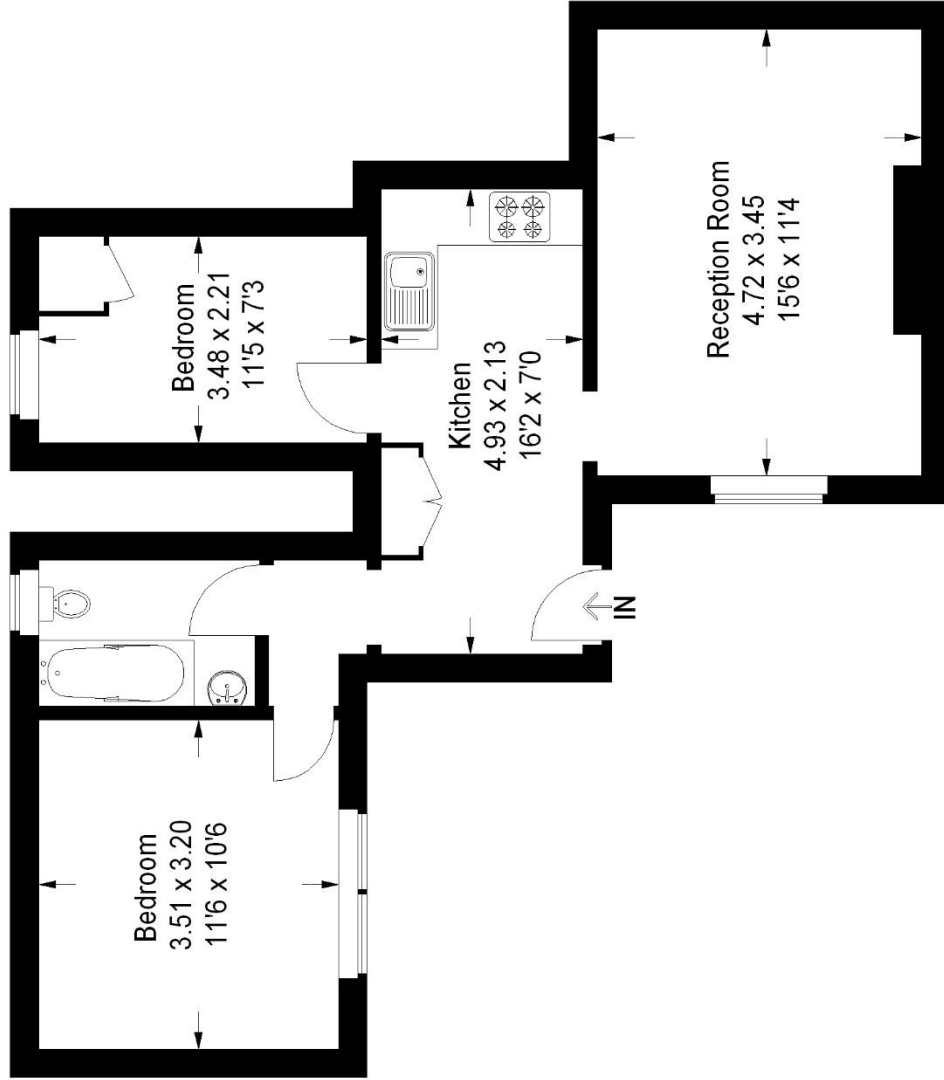
EPC: D



# Floorplan

## Anerley Hill, SE19

Approximate Gross Internal Area  
52.8 sq m / 568 sq ft



Copyright [www.pedderproperty.com](http://www.pedderproperty.com) © 2016  
These plans are for representation purposes only as  
defined by RICS - Code of Measuring Practice. Not to Scale.

Score	Energy rating	Current	Potential
92+	A		
81-91	B		
69-80	C		
55-68	D	67   D	77   C
39-54	E		
21-38	F		
1-20	G		

Pedder Property Ltd trading as Pedder for themselves and for the vendor/landlord of this property whose agents they are, give notice that (1) these particulars do not constitute any part of an offer or contract, (2) all statements contained within these particulars are made without responsibility on the part of Pedder or the vendor/landlord, (3) whilst made in good faith, none of the statements contained within these particulars are to be relied upon as a statement of representation or fact, (4) any intending purchaser/tenant must satisfy him/herself by inspection or otherwise as to the correctness of each of the statements contained within these particulars, (5) the vendor/landlord does not make or give either Pedder or any person in their employment any authority to make or give representation or warranty whatsoever in relation to this property.