



CHATTERTON | REES



Flat 1, 3 Courtfield Gardens, London, SW5 0PA

**Asking price £1,900,000**

This 2 bedroom flat situation in a stucco fronted building boasts a desirable location in The Royal Borough of Kensington. Benefitting from high ceilings and benefitting from recently being refurbished throughout. Courtfield Gardens is located in the prestigious Garden Square, close to Gloucester Road and Earls Court stations.

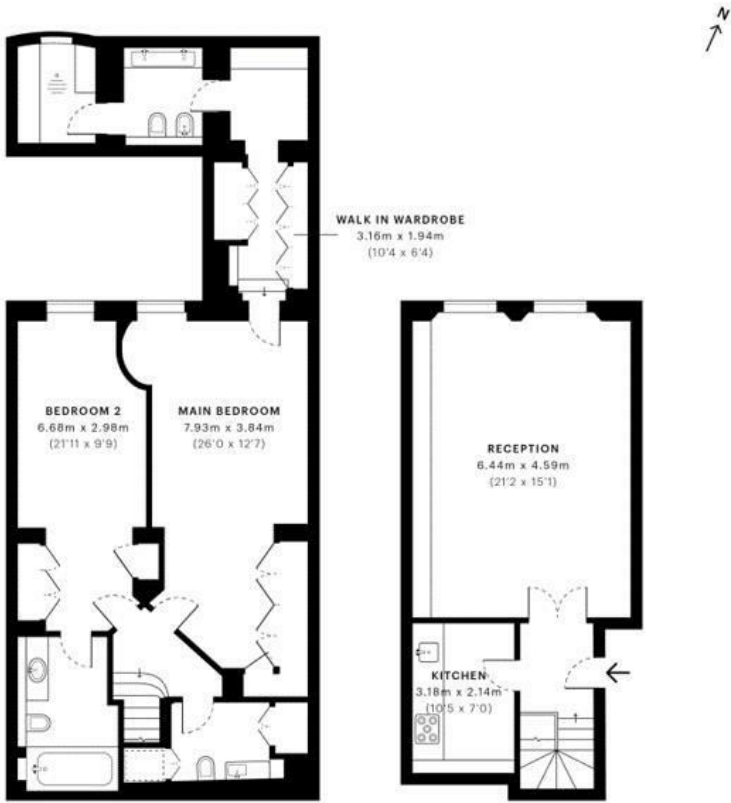


Floor Plan



Courtfield Gardens, SW5

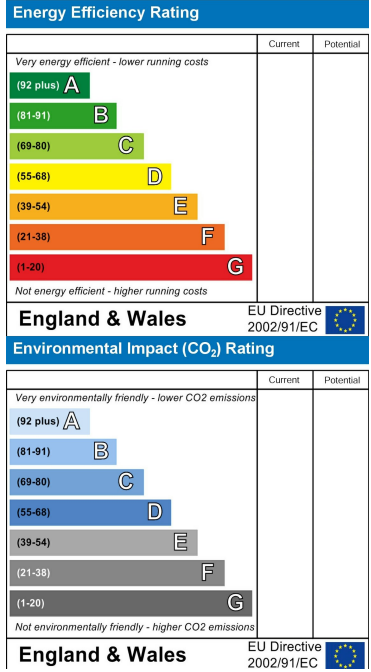
GROSS INTERNAL AREA  
121.68 sqm / 1309.75 sqft



Area Map



Energy Efficiency Graph



These particulars, whilst believed to be accurate are set out as a general outline only for guidance and do not constitute any part of an offer or contract. Intending purchasers should not rely on them as statements of representation of fact, but must satisfy themselves by inspection or otherwise as to their accuracy. No person in this firms employment has the authority to make or give any representation or warranty in respect of the property.