

# Davidson



- Affluent B15 Edgbaston location
- Kitchen with all integrated appliances
- Private driveway/garage
- Situated in the highly sought after Highfield Gardens development

Highfield Road, Edgbaston, Birmingham, B15 3ED

£1,900 pcm

LIVE STREAM RECORDING AVAILABLE - CLICK VIDEO TOUR TO VIEW HIGHFIELD GARDENS | Four Bedrooms | Two Bathrooms | Driveway Parking | Communal Gardens | Gas Central Heating | Gated Development | Furnished | Garage

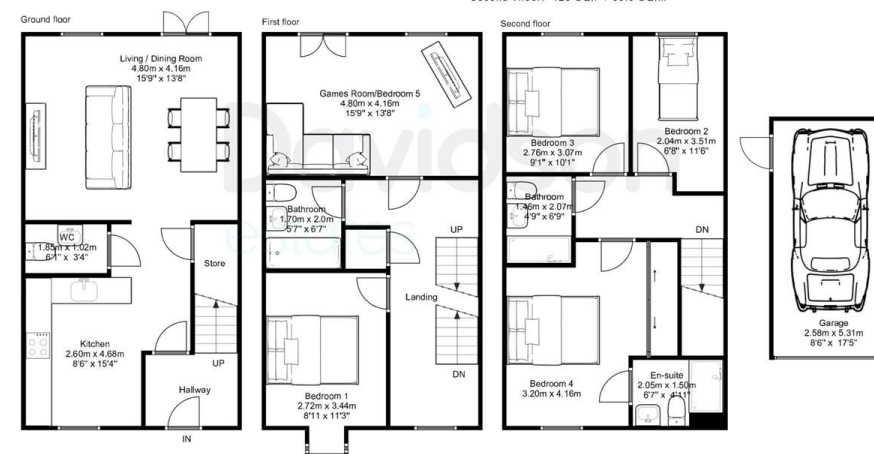




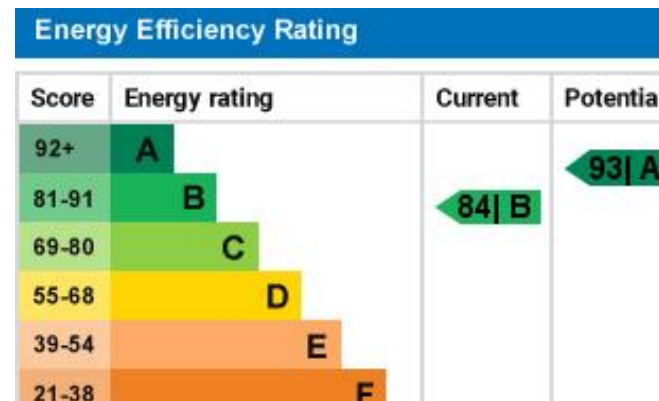
4/5x 4x 1x

6E Highfield Road, Edgbaston, Birmingham, B15 3ED

APPROXIMATE GROSS INTERNAL AREA: 1288.4 SQ.F / 119.7 SQ.M  
Ground floor: 451 SQ.F / 41 SQ.M  
First floor: 422 SQ.F / 39.2 SQ.M  
Second floor: 425 SQ.F / 39.5 SQ.M



Floorplan measurements are for illustrative purpose only. Floor plan by www.sebastiano.co.uk.



Unit 2 Liberty Place, 26-38  
Sheepcote Street, Birmingham,  
West Midlands, B16 8AE

[www.davidsonstates.co.uk](http://www.davidsonstates.co.uk)  
0121 455 7727  
[info@davidsonstates.co.uk](mailto:info@davidsonstates.co.uk)

Agents Note: Whilst every care has been taken to prepare these particulars, they are for guidance purposes only. All measurements are approximate are for general guidance purposes only and whilst every care has been taken to ensure their accuracy, they should not be relied upon and potential buyers/tenants are advised to recheck the measurements