



Inwen Court, Deptford

Asking Price £285,000 Leasehold

OLIVER *OJ* JAQUES
EST. 1986



Inwen Court, Deptford

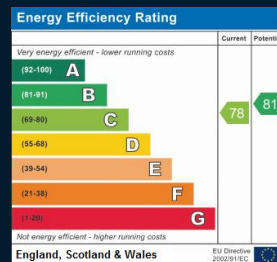
Situated on the edge of Deptford park this first floor apartment in a modern Fairview Homes development is both spacious and bright. The property boasts a spacious double bedroom, reception room with a large bay window, separate kitchen with white goods and tiled bathroom. The property benefits from residential parking and has also been recently double glazed. An ideal first time purchase Inwen Court is within walking distance of mainline and Overground Line stations as well as many bus routes on the neighbouring A200. The immediate area should enjoy a healthy appreciation thanks to the new amenities springing up in Lendlease's adjacent Timber Yard development.

- One Double Bedroom
- First Floor Apartment
- Double Glazing
- Parkside Location
- Residents' Parking
- Extended 187yr Lease

South East London
020 7231 5050

Email southeast@o-j.co.uk

229-231 Lower Road, London, SE16 2LW

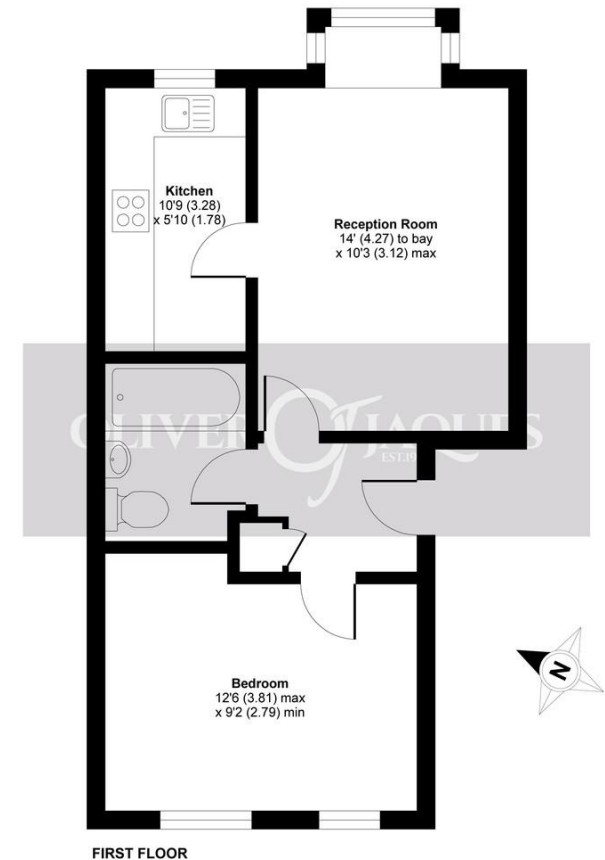


web www.o-j.co.uk

Every care has been taken with the preparation of this brochure but it is for general guidance only and complete accuracy cannot be guaranteed. If there is any point, which is of importance professional verification should be sought. This brochure does not constitute a contract or part of a contract. We are not qualified to verify tenure of property. Prospective purchasers should seek clarification from their solicitor or verify the tenure of this property for themselves by visiting www.gov.uk/government/organisations/land-registry. The mention of any appliances, fixtures or fittings does not imply they are in full working order. Photographs are reproduced for general information and it cannot be inferred that any item shown is included in the sale. All dimensions are approximate. Walking times are taken from Google Maps and measured from the centre of the postcode, which may differ from the individual property. We routinely refer clients to Chancery Mortgage Services Ltd. It is your decision whether you choose to deal with Chancery Mortgage Services Ltd. In making that decision, you should know that we receive an annual payment benefits from Chancery Mortgage Services Ltd, equating to approximately £220 per referral

Grinstead Road, London, SE8

APPROX. GROSS INTERNAL FLOOR AREA 441 SQ FT 40.9 SQ METRES



- **Tenure:** Leasehold
- **Ground Rent:** n/a
 - Fixed
- **Service Charge:** £1,366 pa
- **Lease Expires:** 2209
- **Shared Ownership:** No
- **Council Tax Band:** Lewisham B
 - £1,413.07