



Chatsworth Way SE27
£475,000

0208 702 9888
pedderproperty.com

pedder



In general

- Maisonette
- Two double bedrooms
- Large lounge
- Fitted kitchen
- Modern bathroom
- Original features
- Private garden
- Fantastic location

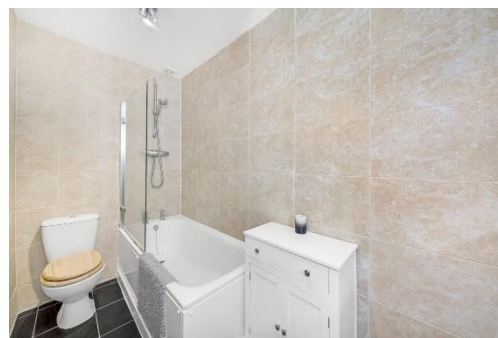
In detail

Pedder are delighted to offer for sale this attractive period ground floor maisonette set within this imposing end of terrace Victorian property on the border of West Dulwich and West Norwood, SE27.

The property is well presented throughout, comprising of a spacious reception room with a superb bay window providing an abundance of natural light. A great-sized kitchen with fitted appliances, two double bedrooms and a modern bathroom. With a gross internal area of 784 sq. ft the property offers wonderfully spacious accommodation throughout. The property also benefits from a private garden which has a patio area and a selection of flowers and shrubs.

Brilliantly located on the cusp of Chatsworth way, a tree-lined street offering easy-access into The City and West End from Tulse Hill station (0.5 miles) with regular services into London Victoria and London Bridge. There are a host of bars, restaurants and local amenities on Norwood High Street including the Picturehouse Cinema and modern library as well as the new Health Centre/gym. The property also provides close-by neighbouring areas such as Dulwich village and Herne Hill.

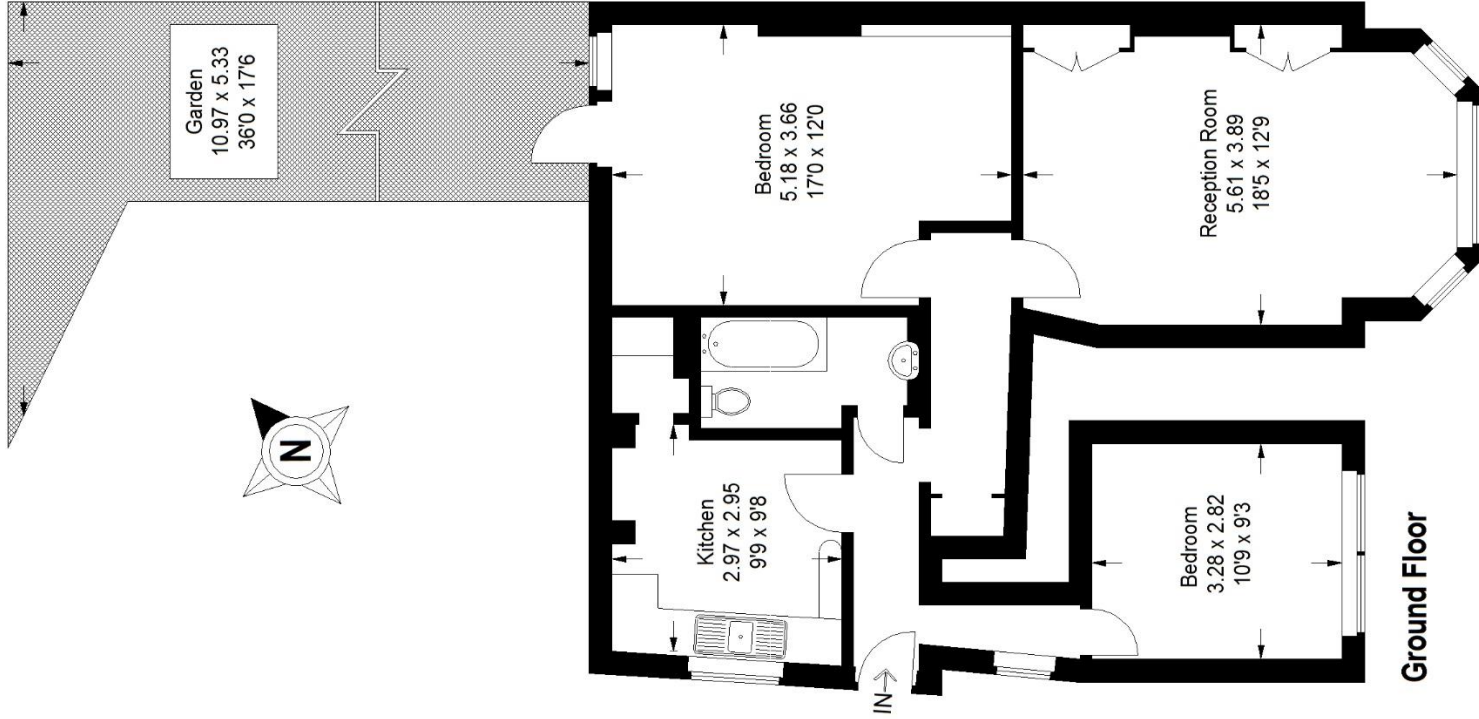
EPC: C



Floorplan

Chatsworth Way SE27

Approximate Gross Internal Area
72.8 sq m / 784 sq ft



Copyright www.pedderproperty.com © 2022
 These plans are for representation purposes only as defined by RICS - Code of Measuring Practice.
 Not drawn to Scale. Windows and door openings are approximate. Please check all dimensions, shapes and compass bearings before making any decisions reliant upon them.

Score	Energy rating	Current	Potential
92+	A		
81-91	B		
69-80	C	72 c	79 c
55-68	D		
39-54	E		
21-38	F		
1-20	G		

Pedder Property Ltd trading as Pedder for themselves and for the vendor/landlord of this property whose agents they are, give notice that (1) these particulars do not constitute any part of an offer or contract, (2) all statements contained within these particulars are made without responsibility on the part of Pedder or the vendor/landlord, (3) whilst made in good faith, none of the statements contained within these particulars are to be relied upon as a statement of representation or fact, (4) any intending purchaser/tenant must satisfy him/herself by inspection or otherwise as to the correctness of each of the statements contained within these particulars, (5) the vendor/landlord does not make or give either Pedder or any person in their employment any authority to make or give representation or warranty whatsoever in relation to this property.