



Edward Square, Rotherhithe

Asking Price £450,000 Leasehold

OLIVER *OJ* JAQUES
EST. 1986



Edward Square, Rotherhithe

A well presented two double bedroomed apartment enjoying large, naturally light, mock-Georgian windows throughout and an enviable position in a sought after riverside development. Edward Square was constructed as part of 'Sovereign View' in the 1990's by Barratt Homes and stretches along the quietest banks of the peninsula's riverside. This property is one of the larger ones in the development, which is made to feel even more spacious thanks to the south aspect flooding the space with light. Internally the property benefits from updated bathrooms and kitchen, laminate flooring throughout the reception areas and gas central heating.

- Two Double Bedrooms
- en-Suite to Master
- Large South-Facing Windows
- Gas Central Heating
- Allocated Parking Bay
- Riverside Development

South East London
020 7231 5050

Email southeast@o-j.co.uk

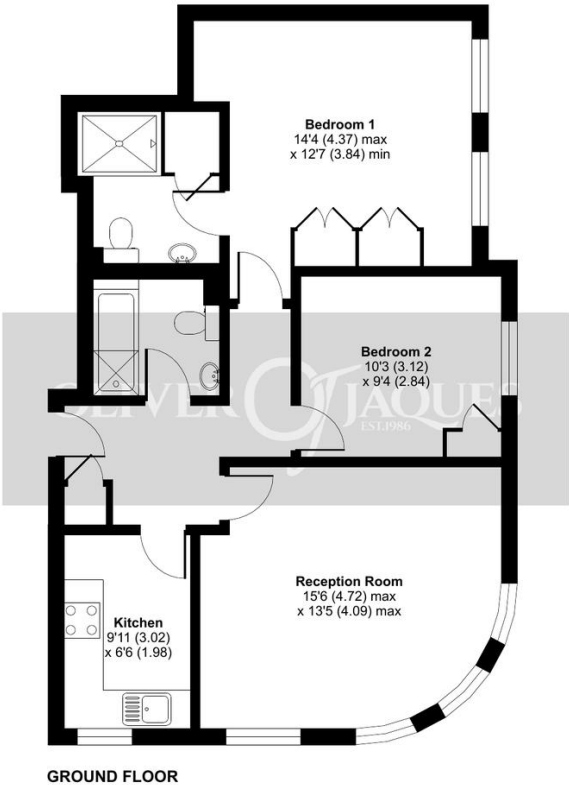
229-231 Lower Road, London, SE16 2LW

web www.o-j.co.uk

Every care has been taken with the preparation of this brochure but it is for general guidance only and complete accuracy cannot be guaranteed. If there is any point, which is of importance professional verification should be sought. This brochure does not constitute a contract or part of a contract. We are not qualified to verify tenure of property. Prospective purchasers should seek clarification from their solicitor or verify the tenure of this property for themselves by visiting www.gov.uk/government/organisations/land-registry. The mention of any appliances, fixtures or fittings does not imply they are in full working order. Photographs are reproduced for general information and it cannot be inferred that any item shown is included in the sale. All dimensions are approximate. Walking times are taken from Google Maps and measured from the centre of the postcode, which may differ from the individual property. We always refer prospective buyers to our panelled conveyancers and Chancery Mortgage Services Ltd. It is your decision whether to use them. Should you decide to do so you should know that we could receive a referral fee from them for recommending them to you.



Edward Square, London, SE16
Approximate Area = 738 sq ft / 68.5 sq m
For identification only - Not to scale



RICS Certified Property Measurer
Floor plan produced in accordance with RICS Property Measurement Standards incorporating International Property Measurement Standards (IPMS2 Residential). © richcom 2022. Produced for Oliver Jacques. REF: 804206

