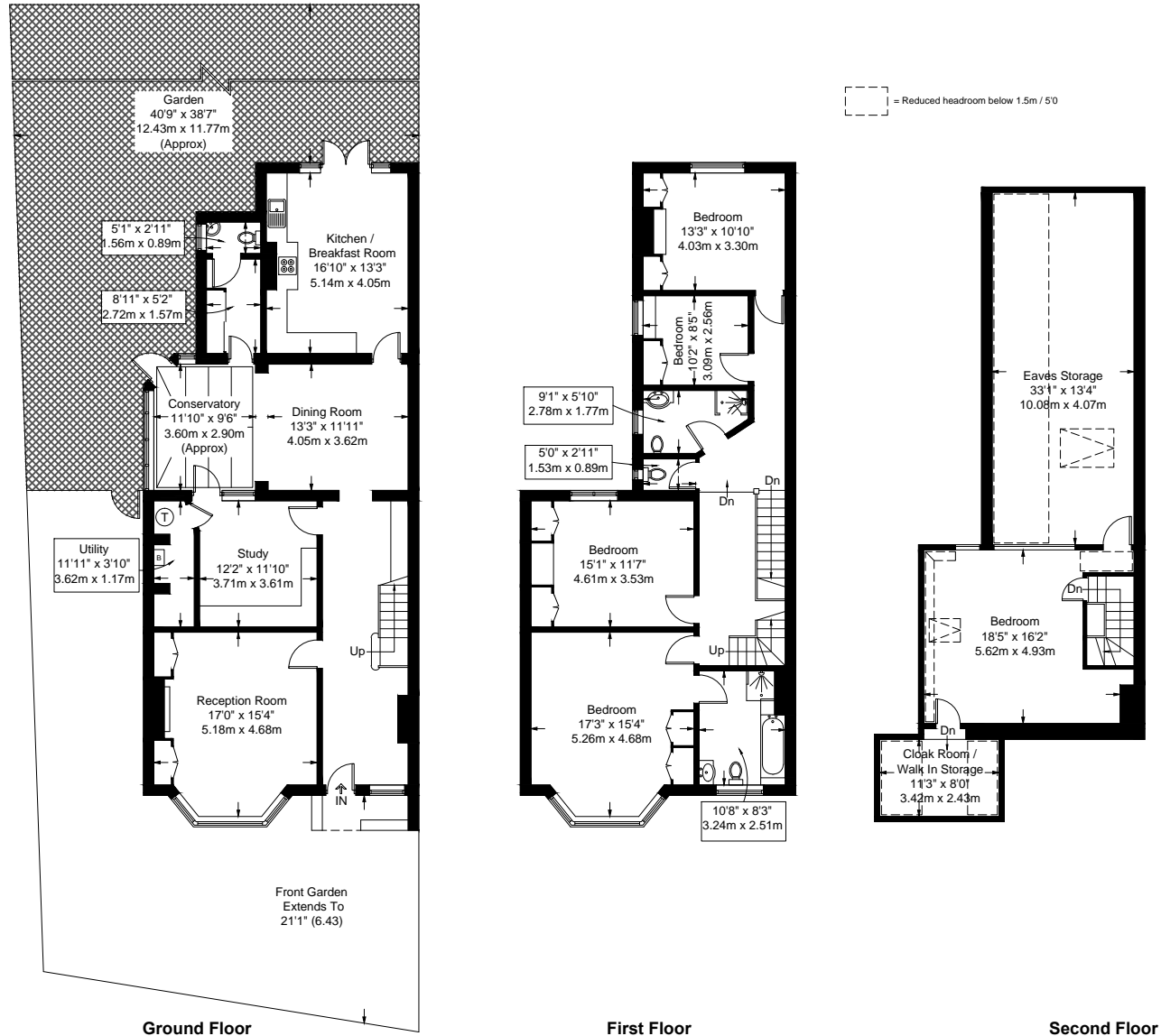


Sutton Court Road, Chiswick, W4 4NG

Approximate Gross Internal Area
 Ground Floor = 118.4 sq m / 1274 sq ft
 First Floor = 98.9 sq m / 1064 sq ft
 Second Floor = 79 sq m / 850 sq ft (Including Eaves Storage)
 Total = 296.3 sq m / 3188 sq ft



Measured in accordance with RICS guidelines. To be used for identification and guidance purposes only. Not to scale.
 © Photos Plans and EPCs | Tel: 07774 688 771 | info@photosplansandepcs.com | www.photosplansandepcs.com