

Greyhound Road

Hammersmith, London, W6





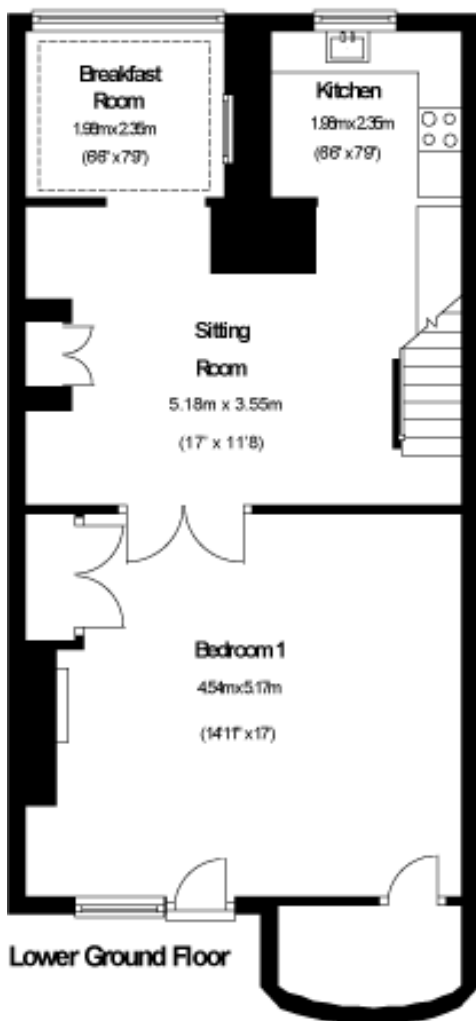
Total area: approx. 63.2 sq. metres (680.3 sq. feet)

Greyhound Road Hammersmith, London, W6

Price Guide: £380,000

As sole agents we are delighted to offer this extremely spacious and well-presented split level one bedroom flat located in a popular location within a short walk to both Hammersmith & Barons Court underground station.

The accommodation comprises a fabulous master bedroom with a period fireplace and walk in dressing room, a 17' reception room, a well fitted kitchen and a separate dining area/conservatory. Further benefits include a share of freehold and no onward chain



Ground Floor



Lower Ground Floor

Extremely spacious and well presented one bedroom flat | Walk in dressing room
Popular location | 17' Reception room | Fully fitted kitchen | Master bedroom with sunken bath
Separate dining area/conservatory | Short walk to River Thames | No onward chain | Patio Area
Close to transport & amenities | 680.3 Sq. Ft. (63.2 Sq. M.) Share of Freehold

All viewings by appointment
through our **Hammersmith Office:**

T: 020 7385 7000
E: hammersmith@lawsonrutter.com

192 Fulham Palace Road, London
W6 9PA

In accordance with the Property Misdescription Act 1991, we wish to emphasise that the information given in these particulars is intended to help you decide whether you wish to view this property. Whilst every care is taken to ensure the accuracy of these particulars please note that all measurements are approximate and we are, for the accuracy of other information, reliant on what the seller has provided. We strongly recommend that you rely on your own inspections and those of your advisors to establish the details of any aspects which are of particular importance. Please note that we have not undertaken any survey of the property or the appliances within it and the buyer must rely on their own investigations prior to exchange of contracts.

