

## Manor Fields London, SW15

A fine, elegant and comfortable ground floor four bed apartment of over 1,500 square foot with two reception rooms, principal suite with dressing room leading to the en-suite bathroom, three further bedrooms, a generous kitchen and four piece family bathroom.

Manor Fields was built in the 1930's and was one of the most prestigious flat developments anywhere in the Capital. Since then it has if anything become even more desirable with the grounds being the third largest private gardens in the Capital and immaculately kept. The flat also has the advantage of an underground garage. The development has an estate office and 24 hours security. EPC – D

Photo's taken prior to current tenancy.



£950,000

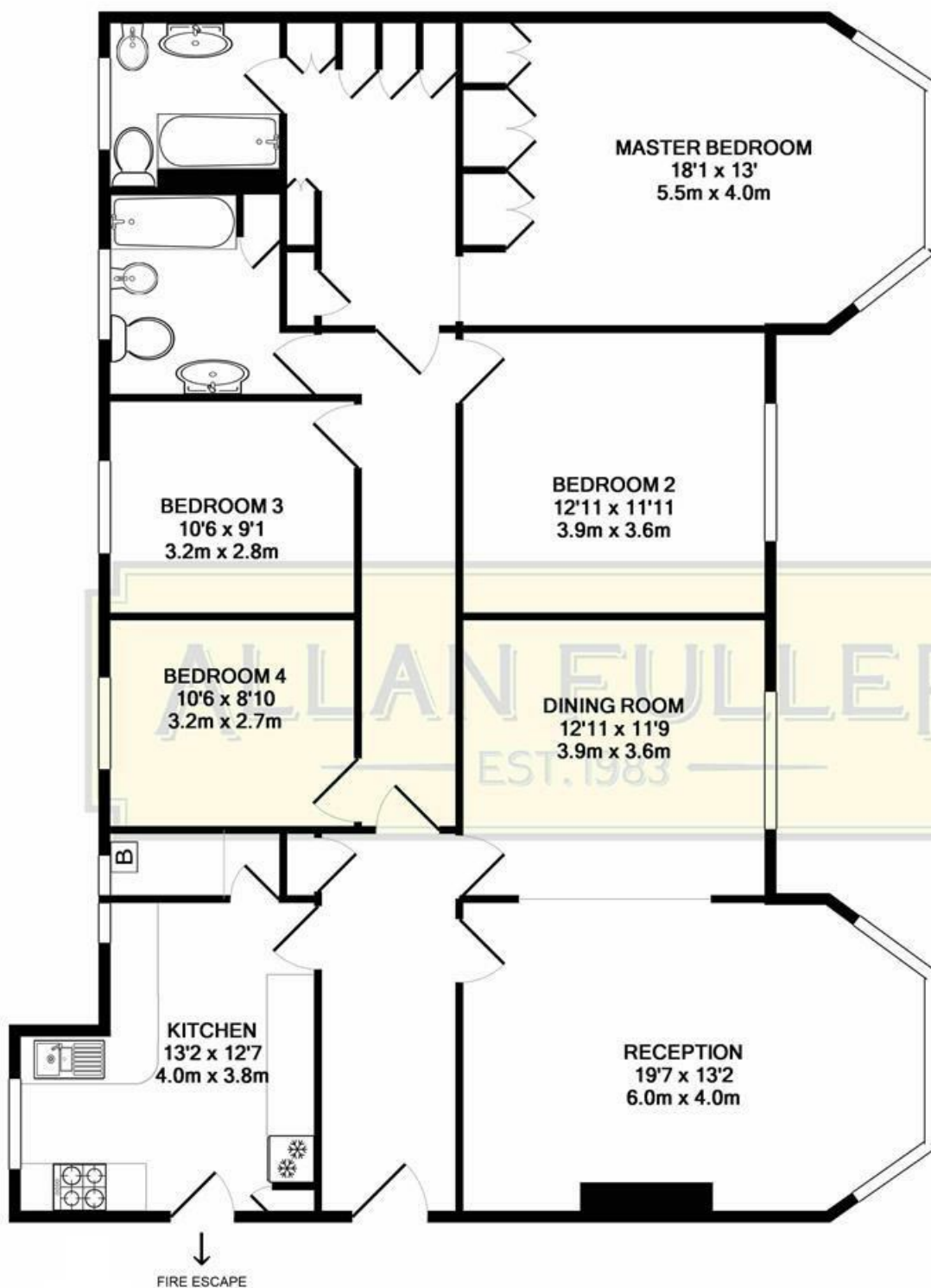
Leasehold - Share of Freehold











MANOR FIELDS, SW15  
TOTAL APPROX. FLOOR AREA 1544 SQ.FT. (143.4 SQ.M.)

Whilst every attempt has been made to ensure the accuracy of the floor plan contained here, measurements of doors, windows, rooms and any other items are approximate and no responsibility is taken for any error, omission, or mis-statement. This plan is for illustrative purposes only and should be used as such by any prospective purchaser. The services, systems and appliances shown have not been tested and no guarantee as to their operability or efficiency can be given  
Made with Metropix ©2019

With regards to any information supplied by us in relation to lease, ground rent and service charge it is essential that you have this information checked by your solicitor. We have transmitted information supplied to us by the vendor of the property but we have not been able to inspect the lease to check its accuracy. Please note that we have not tested any of the equipment or utilities at this property, nothing in these particulars shall be deemed a statement that the property is in good condition or otherwise nor that any of the services or facilities are in good working order. Measurements are approximate they were taken with a sonic tape, are as accurate as possible and usually measured from the widest point of any room. Description provided herein represents the opinion of the author, is given in good faith but should not be constructed as statements of fact. The particulars and photograph are for guidance only.