



Darlington Road, SE27
£1,700PCM

0208 702 9888
pedderproperty.com

pedder

In general

- Ground floor
- Two double bedrooms
- Luxury bathroom
- Fitted kitchen
- Large lounge
- Garden
- Close to transport
- Available end of March

In detail

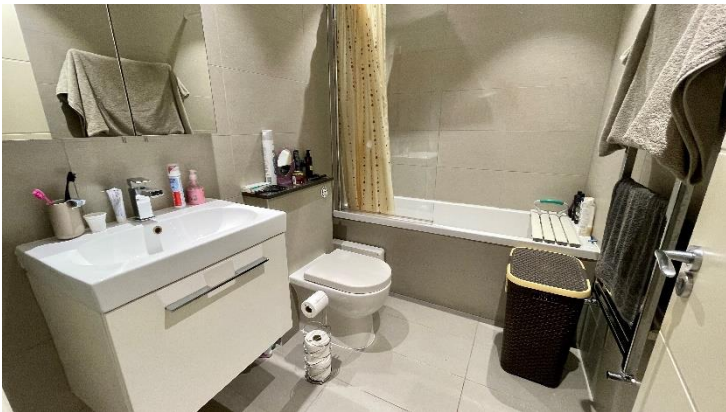
A beautifully presented, spacious two bedroom garden flat on the popular Darlington Road, a quiet residential road in West Norwood, SE27.

This property is very well-presented throughout, located on the ground floor this property comprises of the following: Two double bedrooms, a luxury bathroom, a large lounge combined with a fully fitted kitchen/dining area with a patio door leading to a beautiful rear garden.

Ideally located for the shops, bars, restaurants and amenities of Norwood Road including the leisure centre and new PictureHouse Cinema and library.

Nearest transport is West Norwood station for connections to The City and central London via London Bridge and London Victoria as well as access to a host of buses.

EPC:C | Council Tax Band: C | Unfurnished | Available end of March | Holding Deposit: £392.30 | Security Deposit: £1,961.53



Pedder Property Ltd trading as Pedder for themselves and for the vendor/landlord of this property whose agents they are, give notice that (1) these particulars do not constitute any part of an offer or contract, (2) all statements contained within these particulars are made without responsibility on the part of Pedder or the vendor/landlord, (3) whilst made in good faith, none of the statements contained within these particulars are to be relied upon as a statement of representation or fact, (4) any intending purchaser/tenant must satisfy him/herself by inspection or otherwise as to the correctness of each of the statements contained within these particulars, (5) the vendor/landlord does not make or give either Pedder or any person in their employment any authority to make or give representation or warranty whatsoever in

Score	Energy rating	Current	Potential
92+	A		
81-91	B		
69-80	C	78 C	78 C
55-68	D		
39-54	E		
21-38	F		
1-20	G		