



Burnell Walk, Bermondsey

Asking Price £400,000 Freehold

OLIVER  J AQUES
EST. 1986



Burnell Walk, Bermondsey

Occupying a small residential cul-de-sac, this one bedroom semi-detached house makes for an ideal starter-home in a peaceful corner of SE1. The property short stroll from the wide open spaces of Burgess Park and the warehouse-style retail stores on the Old Kent Road, as well as being in easy reach of the trendy pubs, eateries & microbreweries springing up around Bermondsey's famous railway arches. Briefly comprising an en suite double bedroom upstairs with access to an ample loft space, while downstairs houses a naturally bright south facing reception room and separate fitted kitchen. This property is a rare freehold gem in an area surrounded by leaseholds and eliminates the declining lease problem often associated with first-time-buys.

- Semi-Detached House
- Residential Cul-de-Sac
- One Bedroom Starter Home
- uPVC Double Glazing
- Ample Loft Space
- Allocated Parking

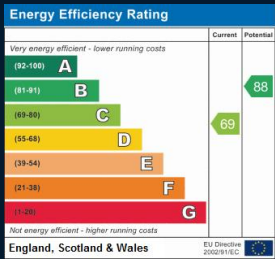
South East London
020 7231 5050

Email southeast@o-j.co.uk

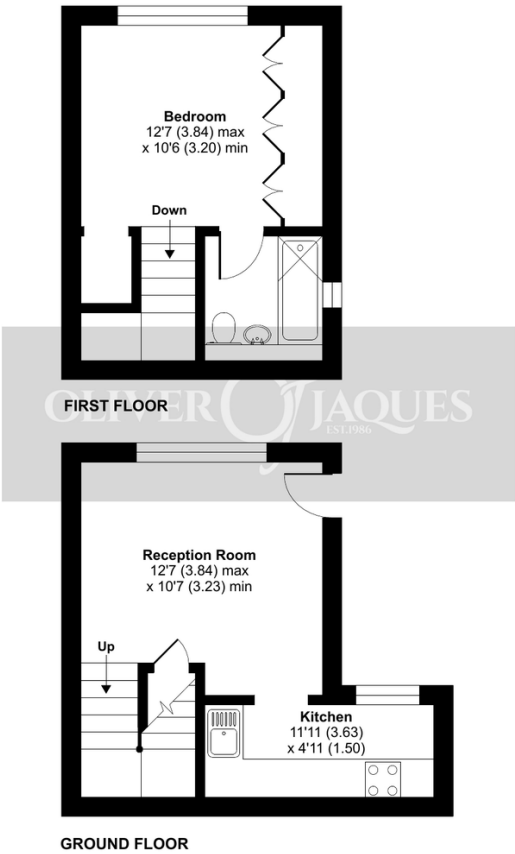
229-231 Lower Road, London, SE16 2LW

web www.o-j.co.uk

Every care has been taken with the preparation of this brochure but it is for general guidance only and complete accuracy cannot be guaranteed. If there is any point, which is of importance professional verification should be sought. This brochure does not constitute a contract or part of a contract. We are not qualified to verify tenure of property. Prospective purchasers should seek clarification from their solicitor or verify the tenure of this property for themselves by visiting www.gov.uk/government/organisations/land-registry. The mention of any appliances, fixtures or fittings does not imply they are in full working order. Photographs are reproduced for general information and it cannot be inferred that any item shown is included in the sale. All dimensions are approximate. Walking times are taken from Google Maps and measured from the centre of the postcode, which may differ from the individual property. We routinely refer clients to Chancery Mortgage Services Ltd. It is your decision whether you choose to deal with Chancery Mortgage Services Ltd. In making that decision, you should know that we receive an annual payment benefits from Chancery Mortgage Services Ltd, equating to approximately £220 per referral



Burnell Walk, London, SE1
Approximate Area = 470 sq ft / 43.7 sq m
For identification only - Not to scale



RICS Certified Property Measurer
Floor plan produced in accordance with RICS Property Measurement Standards incorporating International Property Measurement Standards (IPMS2 Residential). © richcom 2022. Produced for Oliver Jacques. REF: 728791

- **Tenure:** Freehold
- **Ground Rent:** n/a
 - Fixed
- **Service Charge:** £500 pa
- **Lease Expires:** n/a
- **Shared Ownership:** No
- **Council Tax Band:** Southwark C
 - £1,417.37