

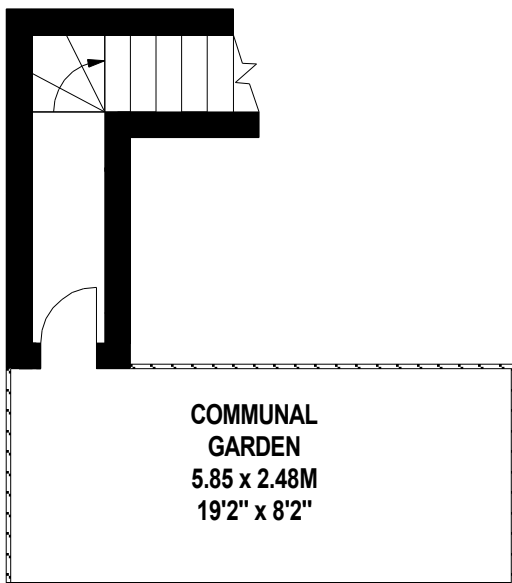
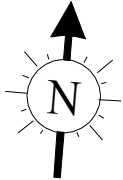
# Somerset Road, W4

Approximate gross internal area

**98.66 sq m / 1062 sq ft**  
**(Including Eaves Storage)**

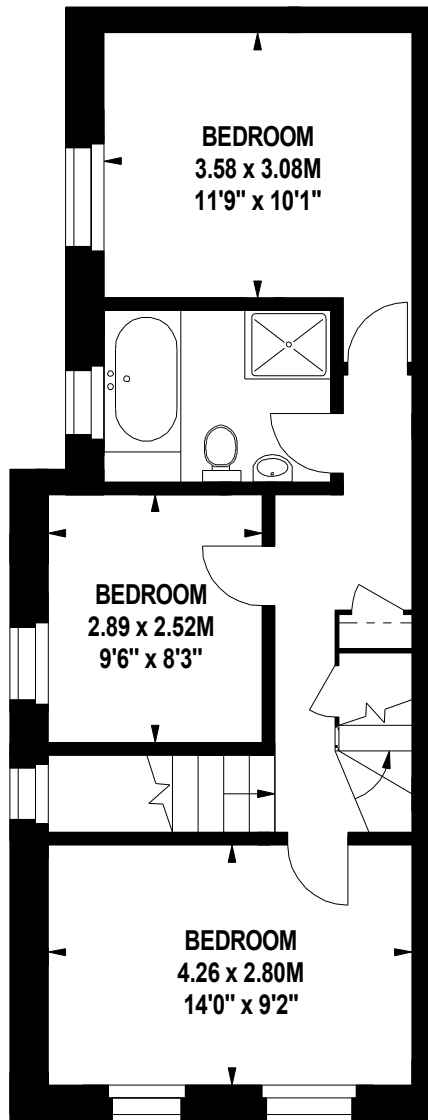
**Eaves Storage**

**9.29 sq m / 100 sq ft**



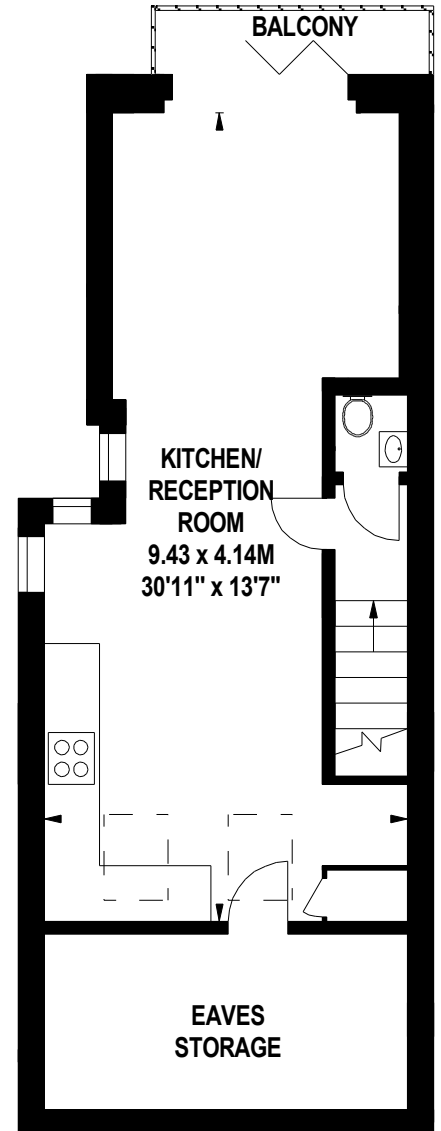
## Ground Floor

49 sq ft



## First Floor

525 sq ft



## Second Floor

388 sq ft

The floor plan is not to scale and measurements and areas shown are approximate and therefore should be used for illustrative purposes only.

The plan has been prepared in accordance with the RICS code of Measuring Practice and whilst we have confidence in the information produced, it must not be relied on.

If there is any aspect of particular importance, you should carry out or commission your own inspection of the property.

Copyright of FeaturePRO.