



Pymers Mead, SE21
£849,950

020 8702 8111
[pedderproperty.com](https://www.pedderproperty.com)

pedder



In general

- A modern townhouse for sale
- Four bedrooms
- Two bathrooms
- Large double reception room
- Modern fitted kitchen, Utility room
- Lovely south facing patio garden
- Further attractive communal gardens
- Off street parking
- Very well presented throughout
- Central location close to schools and transport links

In detail

A modern townhouse for sale located on this highly sought-after development set back from Croxted Road in Dulwich.

The property is presented in attractive decorative order throughout and has flexible accommodation arranged over three floors comprising three double bedrooms, fourth bedroom/study, two bathrooms, large L shaped double reception room, fitted kitchen, utility room and single integral garage.

Externally to the front there is a drive providing off street parking and to the rear a lovely, secluded south facing patio garden. From the rear garden there is direct access into attractive communal gardens.

Both Dulwich Village and Herne Hill are close by with their outstanding schools, popular parks, numerous cafes, bars and restaurants. The popular Rosendale Primary School is located just a short distance away on Rosendale Road.

Excellent rail links to central London are from nearby West Dulwich (London Victoria/London Blackfriars) and Herne Hill (London Victoria/Thameslink).

An internal viewing of this lovely property is advised.

EPC: TBC | Council Tax Band: E



Floorplan

Pymers Mead, SE21

Approximate Gross Internal Area

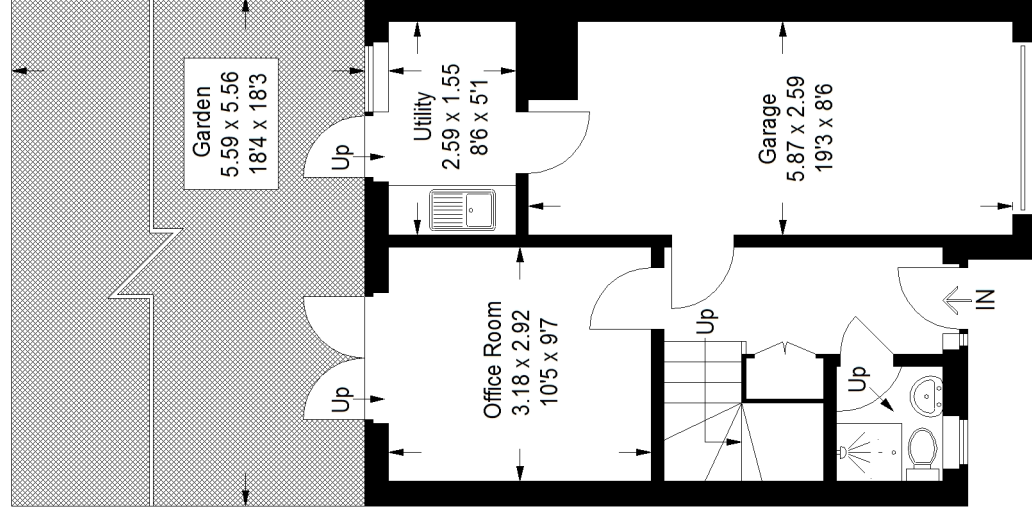
Ground Floor (Including Garage)

40.9 sq m / 440 sq ft

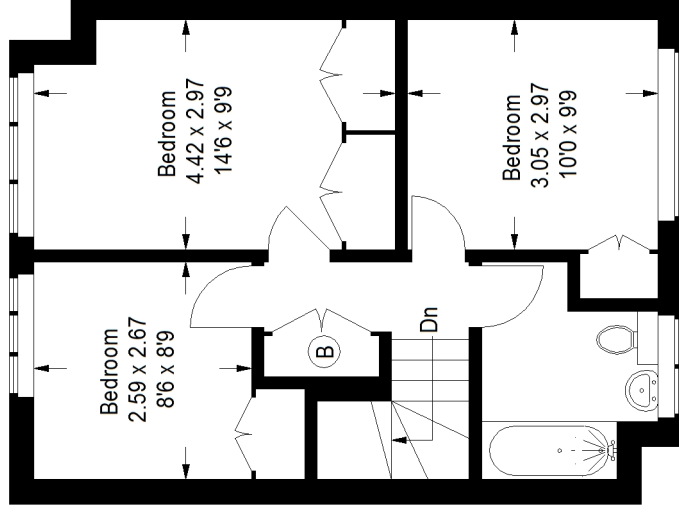
First Floor = 45.8 sq m / 493 sq ft

Second Floor = 41.8 sq m / 450 sq ft

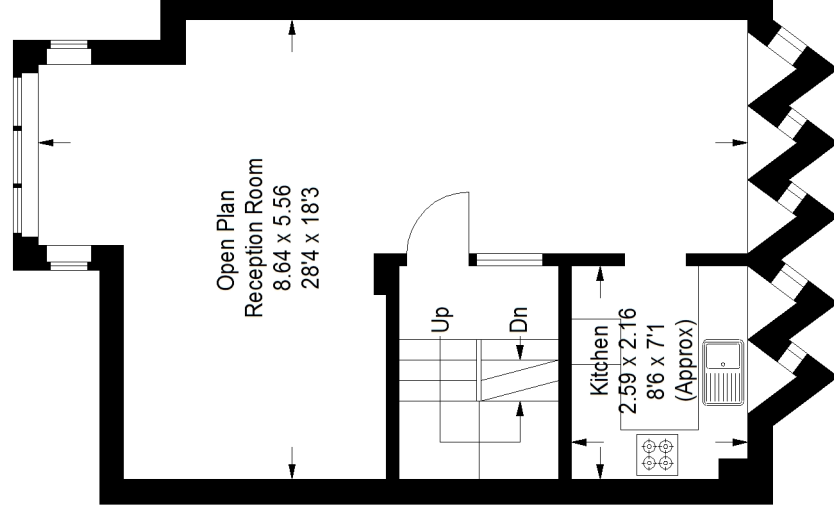
Total = 128.5 sq m / 1383 sq ft



Ground Floor



Second Floor



First Floor

Copyright www.pedderproperty.com © 2022

These plans are for representation purposes only as defined by RICS - Code of Measuring Practice. Not drawn to Scale. Windows and door openings are approximate. Please check all dimensions, shapes and compass bearings before making any decisions reliant upon them.