



Sutton Court, London, W4 3JF

An immaculately presented one bedroom apartment situated in the very popular imposing mansion block located in the "Grove Park" area of Chiswick with its array of open spaces including Chiswick House Grounds, Dukes meadow and the delightful walks along the Riverside. Local shopping on grove park & station & Fauconberg parades includes The Co-op, pharmacies, restaurants & newsagents further afield are the more extensive shopping along Chiswick's main high Road. Accommodation provides: reception room 17'3x14'2 period fireplace with feature bay window overlooking central private communal gardens, kitchen/breakfast room with modern fitted kitchen, double bedroom with fitted wardrobes, entrance hall, mainly wood flooring to living areas, gas fired central heating communal gardens and bike storage, parking on a first come basis. Local transport links include Chiswick mainline station(to waterloo) Chiswick Park (tube station) via underpass, numerous local bus routes with convenient vehicular access via A4/M4/M40 to central London, Heathrow & The West, the property is offered part furnished and is available immediately. Hounslow Council Tax Band D

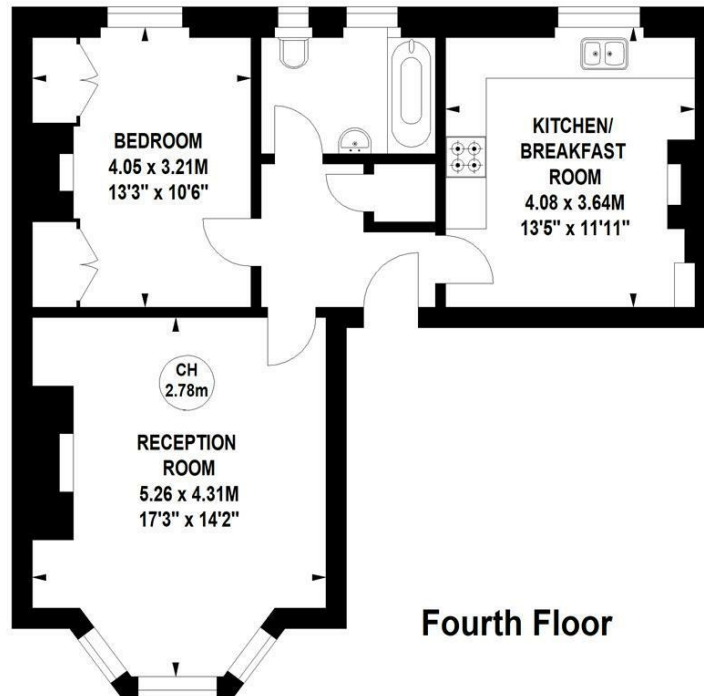
- Bright and spacious mansion apartment
- Located in the popular "Grove Park" area
- Presented in excellent condition
- Good for transport links & local amenities
- 17'3 x 14'2 reception room
- Modern kitchen/breakfast room
- Double bedrooms with fitted wardrobes
- Modern family bathroom
- Communal gated private gardens & bike stores
- Available immediately, part furnished

£1,450 Per Calendar Month

Sutton Court, W4

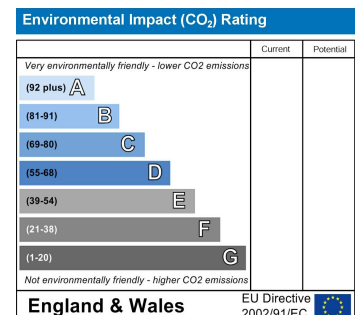
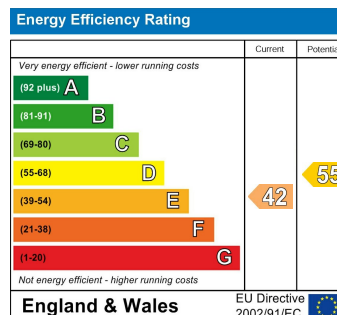
Approximate gross internal area
59.83 sq m / 644 sq ft

Key :
CH - Ceiling Height



Fourth Floor

Not to scale, for guidance only and must not be relied upon as a statement of fact.
All measurements and areas are approximate only



5-7 Turnham Green Terrace, Chiswick, London, W4 1RG

Tel 020 8747 8800

E-mail lettings@whitmanandco.com

Website www.whitmanandco.com



MISREPRESENTATION ACT 1967

Whitman & Co. for themselves and for the vendors give notice that these particulars do not constitute any part of, an offer of contract. All statements contained in these particulars are made without responsibility on the part of Whitman & Co. or the vendor. None of the statements contained in these particulars is to be relied upon as statements or representations of facts. Any intending purchaser must satisfy himself by inspection or otherwise as to the correctness of each of the statements contained in these particulars. The vendor does not make or give, and neither Whitman & Co. or any person in their employment has any authority to make or give, any representation or warranty whatever in relation to the property.