



Waldeck Road, London, W4 3NU

Guide Price £950,000

**WHITMAN & CO.**

SALES · LETTINGS · COMMERCIAL



- Four bedroom plus study period house
- Landscaped courtyard garden
- Versatile accommodation
- 24' Through reception room
- South facing terrace
- Close proximity to Strand on the Green

Tenure - Freehold  
Local Authority - Hounslow  
Council Tax - Band F

## THE PROPERTY

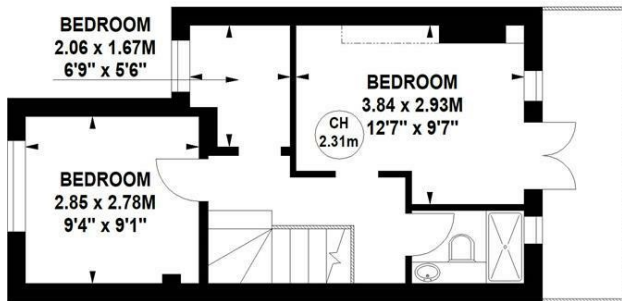
An immaculately presented and extremely versatile four-bedroom Victorian house ideally located in the sought after Strand on the Green area, close to numerous amenities. Four bedrooms, study room, two luxury shower rooms, 24' through reception room, fully integrated kitchen, cloakroom, landscaped courtyard garden, south-facing terrace, polished hardwood floors, extensive built-in storage. Situated within close proximity of numerous transport facilities, Strand on the Green Riverside and outstanding local schools.

## Waldeck Road, W4

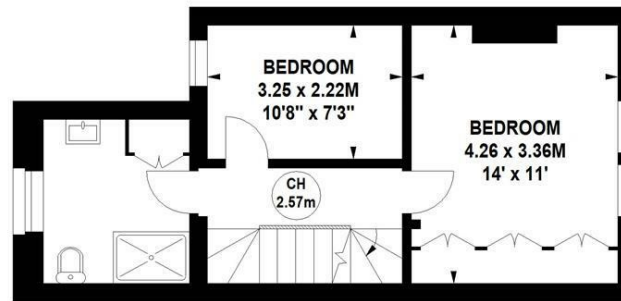
Approximate gross internal area

107.95 sq m / 1162 sq ft

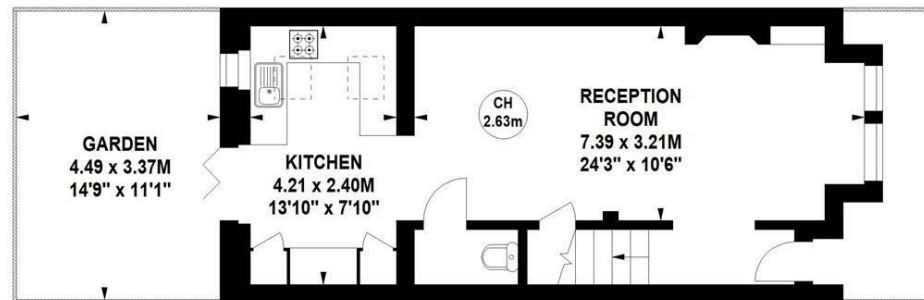
Key :  
CH - Ceiling Height



Second Floor



First Floor



Ground Floor

Not to scale, for guidance only and must not be relied upon as a statement of fact.  
All measurements and areas are approximate only

## SITUATION



5-7 Turnham Green Terrace, Chiswick, London, W4 1RG

Tel 020 8747 8800

E-mail [sales@whitmanandco.com](mailto:sales@whitmanandco.com)

Website [www.whitmanandco.com](http://www.whitmanandco.com)