



Graham Road, London, W4 5DR
Guide Price £1,200,000

WHITMAN & CO.

SALES · LETTINGS · COMMERCIAL

- Period Semi-detached House
- 17' Bespoke Kitchen/Breakfast Room
- Five Bed/Two Bath
- Tree-lined Residential Street
- Landscaped Courtyard Garden
- No Chain

Tenure - Freehold
Local Authority - Ealing
Council Tax - Band F

THE PROPERTY

An immaculately presented five-bedroom semi-detached family home ideally located in this tree-lined residential street offering close proximity to numerous amenities. This five-bed, two-bath property offers a large entrance hall, cloak room, front reception room leading to a bright 17' bespoke kitchen/breakfast room with glass doors to the landscaped courtyard garden. Ideally situated within close proximity of Turnham green, Chiswick Park and South Acton stations along with the extensive shopping facilities of Chiswick High Road. No Chain.

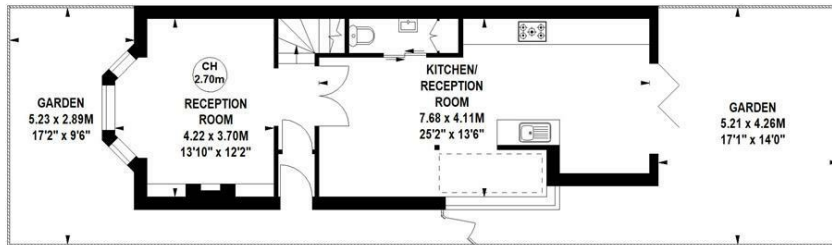
Graham Road, W4

Approximate gross internal area

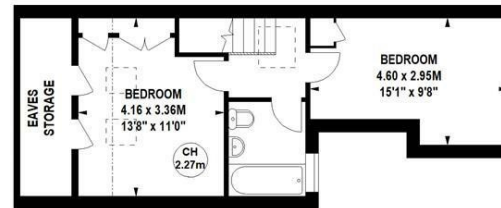
133.31 sq m / 1435 sq ft
(Including Eaves Storage)

Eaves Storage
5.02 sq m / 54 sq ft

Key :
CH - Ceiling Height



Ground Floor



Second Floor



First Floor

Not to scale, for guidance only and must not be relied upon as a statement of fact.
All measurements and areas are approximate only

SITUATION



5-7 Turnham Green Terrace, Chiswick, London, W4 1RG

Tel 020 8747 8800

E-mail sales@whitmanandco.com

Website www.whitmanandco.com