



Hawkstone Road, Surrey Quays

Asking Price £430,000 Leasehold

OLIVER  JACQUES
EST.1986



Hawkstone Road, Surrey Quays

Located on the cusp of fashionable Surrey Quays, within close proximity of Canada Water station, this naturally light duplex apartment would make a conveniently located home for a commuting homeowner. Built by Wates in 1965, the building has recently undergone a period of works including new double glazing, cavity-wall insulation and external redecoration throughout. This well-presented unit enjoys three upstairs double bedrooms, a spacious kitchen diner and a separate reception room which leads onto a private balcony. Parking is provided by a permit scheme on the development, while the green open spaces of Southwark Park are directly opposite offering a plethora of outside activities.

- Three Double Bedrooms
- Duplex Apartment
- Private South Facing Balcony
- High Decorative Order
- Recently Renovated Building
- Opposite Southwark Park

Oliver Jaques Surrey Quays
020 7231 5050

Email southeast@o-j.co.uk

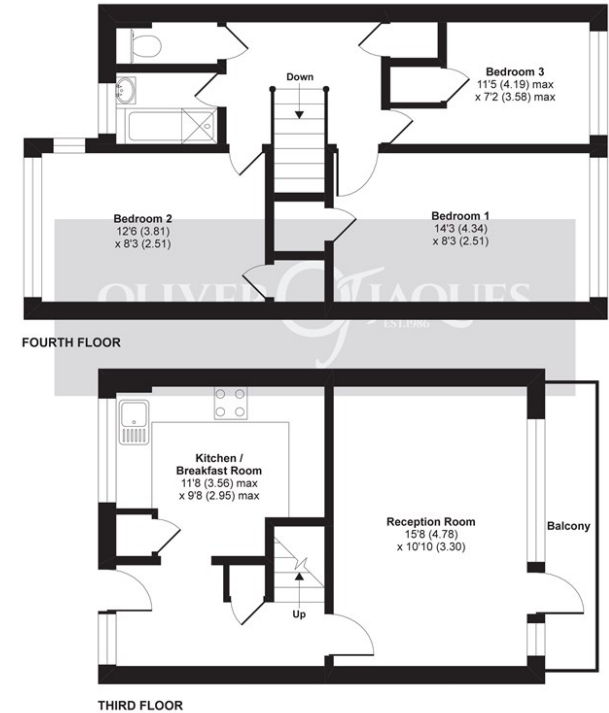
229/231 Lower Road, Surrey Quays, London, SE16 2LW

web www.o-j.co.uk

Every care has been taken with the preparation of this brochure but it is for general guidance only and complete accuracy cannot be guaranteed. If there is any point, which is of importance professional verification should be sought. This brochure does not constitute a contract or part of a contract. We are not qualified to verify tenure of property. Prospective purchasers should seek clarification from their solicitor or verify the tenure of this property for themselves by visiting www.gov.uk/government/organisations/land-registry. The mention of any appliances, fixtures or fittings does not imply they are in full working order. Photographs are reproduced for general information and it cannot be inferred that any item shown is included in the sale. All dimensions are approximate. Walking times are taken from Google Maps and measured from the centre of the postcode, which may differ from the individual property. We routinely refer clients to Chancery Mortgage Services Ltd. It is your decision whether you choose to deal with Chancery Mortgage Services Ltd. In making that decision, you should know that we receive an annual payment benefits from Chancery Mortgage

Jarman House, London, SE16

APPROX. GROSS INTERNAL FLOOR AREA 809 SQ FT 75.1 SQ METRES



Whilst every attempt has been made to ensure the accuracy of the floor plan contained here, measurements of doors, windows and rooms are approximate and no responsibility is taken for any error, omission or misstatement. These plans are for representation purposes only as defined by RICS Code of Measuring Practice and should be used as such by any prospective purchaser. Specifically no guarantee is given on the total square footage of the property if quoted on this plan. Any figure given is for initial guidance only and should not be relied on as a basis of valuation.

Copyright nichecom.co.uk 2019 Produced for Oliver Jaques REF : 458649

Tenure: Leasehold

Ground Rent: £10 pa

- Fixed

Service Charge: £962 pa

Lease Expires: 2130

Shared Ownership: No

Council Tax Band: Southwark London Borough

Council (Band C)

£1,417.37 pa

