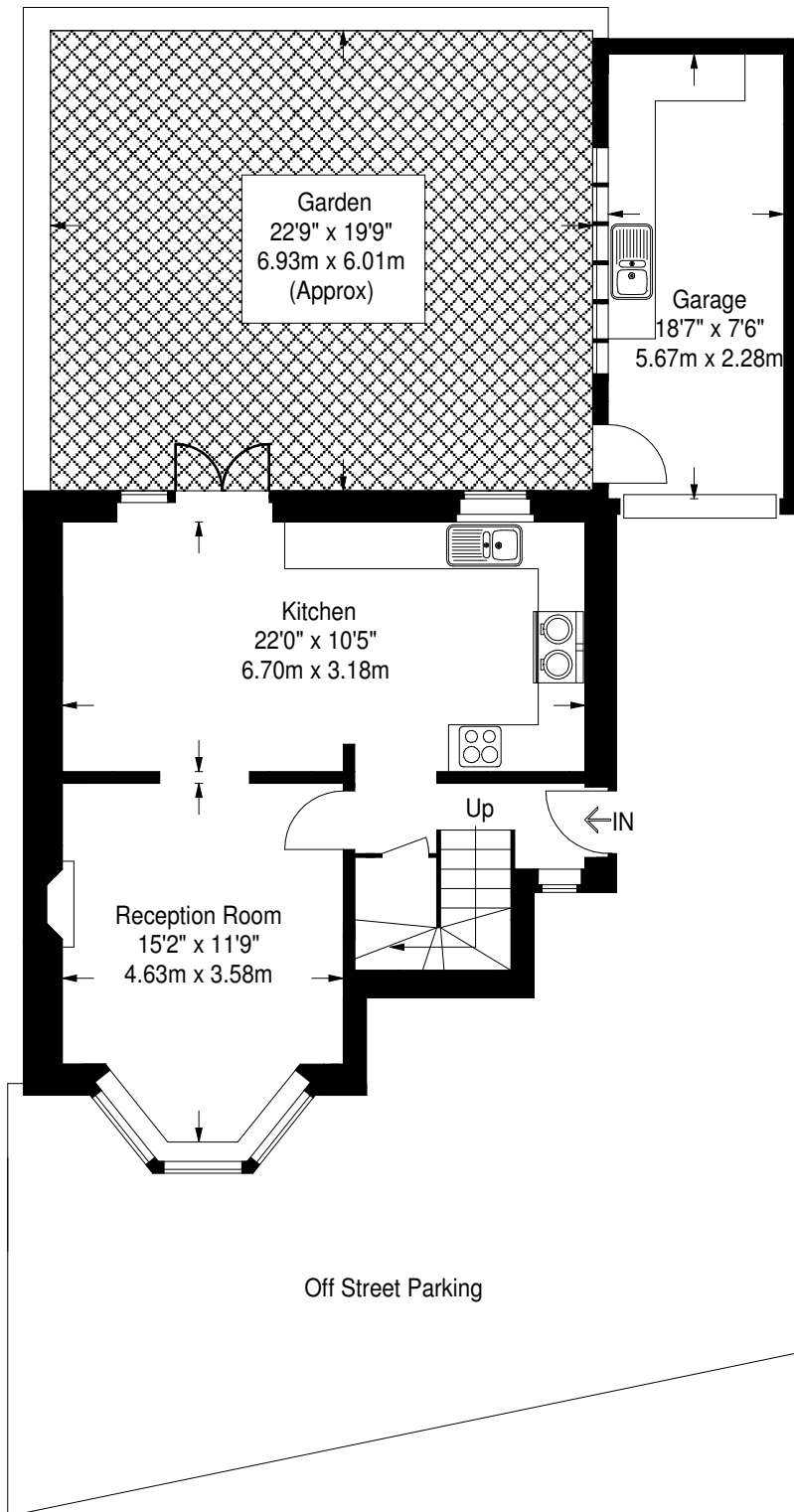
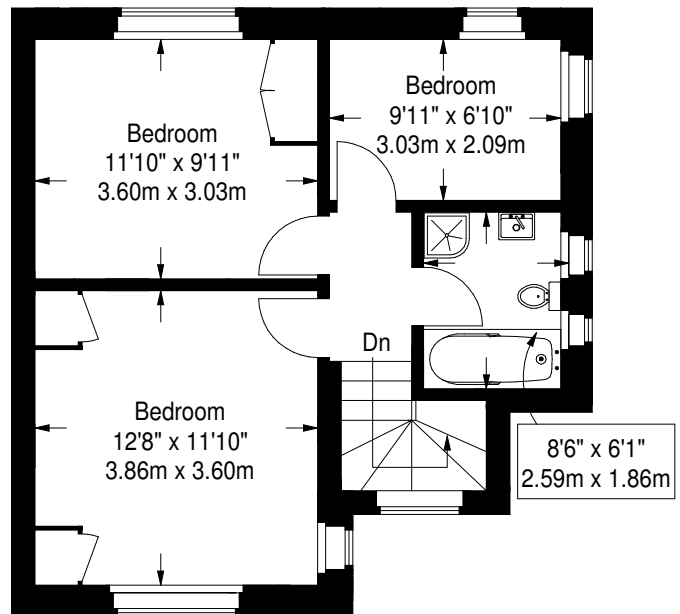


# Park Road, Chiswick W4 3HP



Ground Floor

Approximate Gross Internal Area  
Ground Floor = 44 sq m / 473 sq ft  
First Floor = 42.2 sq m / 454 sq ft  
Garage = 12.9 sq m / 139 sq ft  
Total = 99.1 sq m / 1066 sq ft



First Floor