

# SW19



**South Park Road**

London

**£3,500 pcm**

**Five double bedroom house  
High specification  
EPC Rating - tcb  
Available mid August  
Flexible on furnishing  
Close to transport**



**SW19 Estate Agents Ltd.**

**Wimbledon Town** 83b Hartfield Crescent London SW19 3RZ

**South Wimbledon** 119 Merton Road London SW19 1ED

**Colliers Wood** 44 High Street London SW19 2AB

020 8544 2828

info@SW19.com

SW19.com

SW19 Estate Agents Ltd. Is registered in England & Wales No. 05508737 Registered Office: 83b Hartfield Crescent London SW19 3RZ

A simply stunning five double bedroom home located in one of Wimbledon's most sought after residential roads, within the highly desirable 'South Park Gardens' area. Situated within minutes of Wimbledon town centre, mainline station and South Wimbledon tube (Northern line). Downstairs has a great deal of living space to include living room, dining room and a spacious open plan kitchen formed with an island breakfast bar and high end built in appliances. Bi folding doors from the kitchen allows a seamless transition and makes an amazing space for everyday living and entertaining friends and family. Master bedroom with en-suite, four further double bedrooms, ultra-modern family bathroom suite, ample eaves storage throughout, and down stairs WC. This home is a credit to the current landlord. Flexible on furnishing and available mid August 2018.



---

## SW19 Estate Agents Ltd.

**Wimbledon Town** 83b Hartfield Crescent London SW19 3RZ

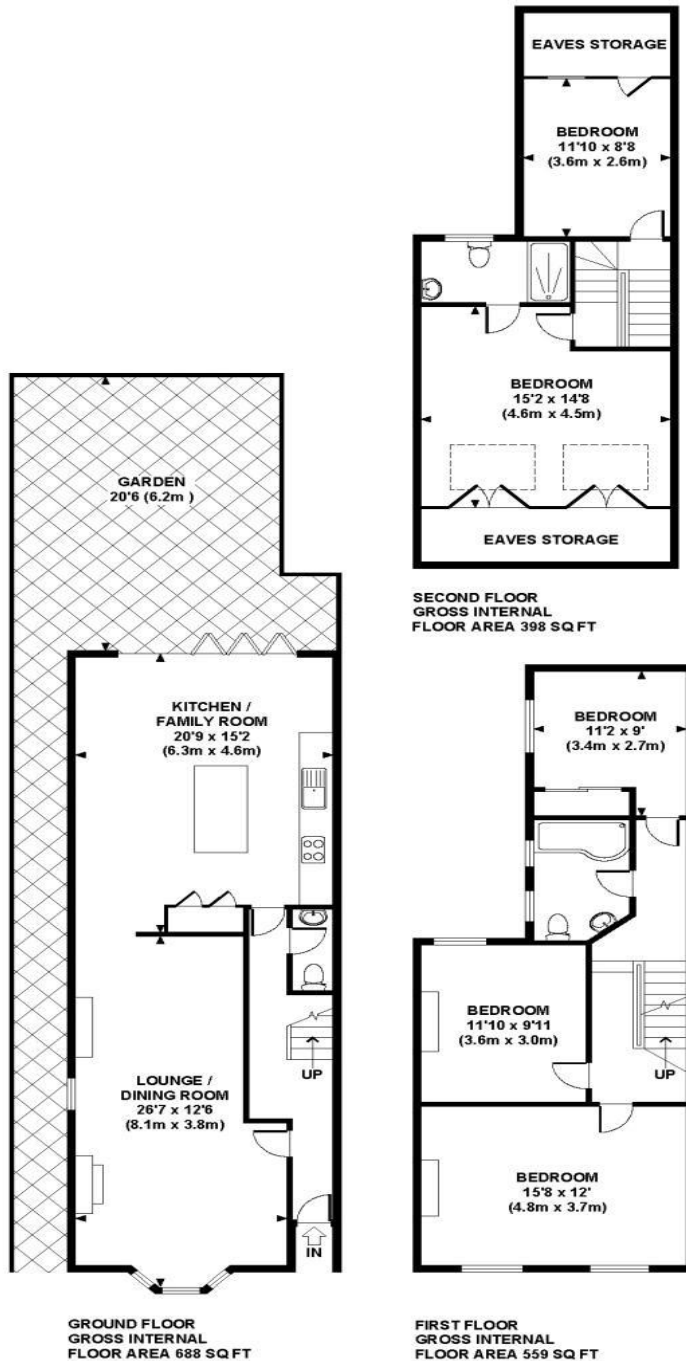
**South Wimbledon** 119 Merton Road London SW19 1ED

**Colliers Wood** 44 High Street London SW19 2AB

020 8544 2828

info@SW19.com

SW19.com



**APPROX. GROSS INTERNAL FLOOR AREA 1645 SQ FT / 153 SQ M**  
Copyright SW19

Floorplans are for identification and guideline purposes only, not to scale.  
Compliant with RICS code of measuring practice.

These particulars are for guidance only and should not be relied upon as a statement or representation of fact. All measurements given are approximate only and should not be relied upon for ordering carpets, equipment etc. Purchasers should satisfy themselves by inspection or otherwise as to the accuracy of the statements contained within. Neither SW group limited or related companies or their employees are able to confirm structural conditions of the property or that any appliances or other facilities are in working order. Purchasers are strongly recommended to arrange their own survey.

**SW19 Estate Agents Ltd.**

**Wimbledon Town** 83b Hartfield Crescent London SW19 3RZ  
**South Wimbledon** 119 Merton Road London SW19 1ED  
**Colliers Wood** 44 High Street London SW19 2AB

020 8544 2828  
 info@SW19.com  
 SW19.com