



Tite Street, Chelsea, SW3

ASHDOWN MARKS
PROPERTY CONSULTANTS

Tite Street, Chelsea, SW3

3 Bedrooms | 1 Reception | 2 Bathrooms | To Let

Ashdown Marks

9 Milner Street, London, SW3 2QB
lettings@ashdownmarks.co.uk

www.ashdownmarks.co.uk

£1,350 per week

Description

A bright well presented top floor maisonette (with lift) with west facing rooftop views.

This spacious flat has three double bedrooms, a large reception room, eat-in kitchen, two bathrooms, utility room and an attractive roof terrace.

Oscar Court is a well maintained period building on this tree-lined street, just to the south of Tedworth Square.

Main Features

- Reception Room
- Kitchen
- Three Bedrooms
- Two Bathrooms (One En Suite)
- Cloakroom
- Utility Room
- Roof Terrace
- Lift
- Caretaker
- EPC Rating D

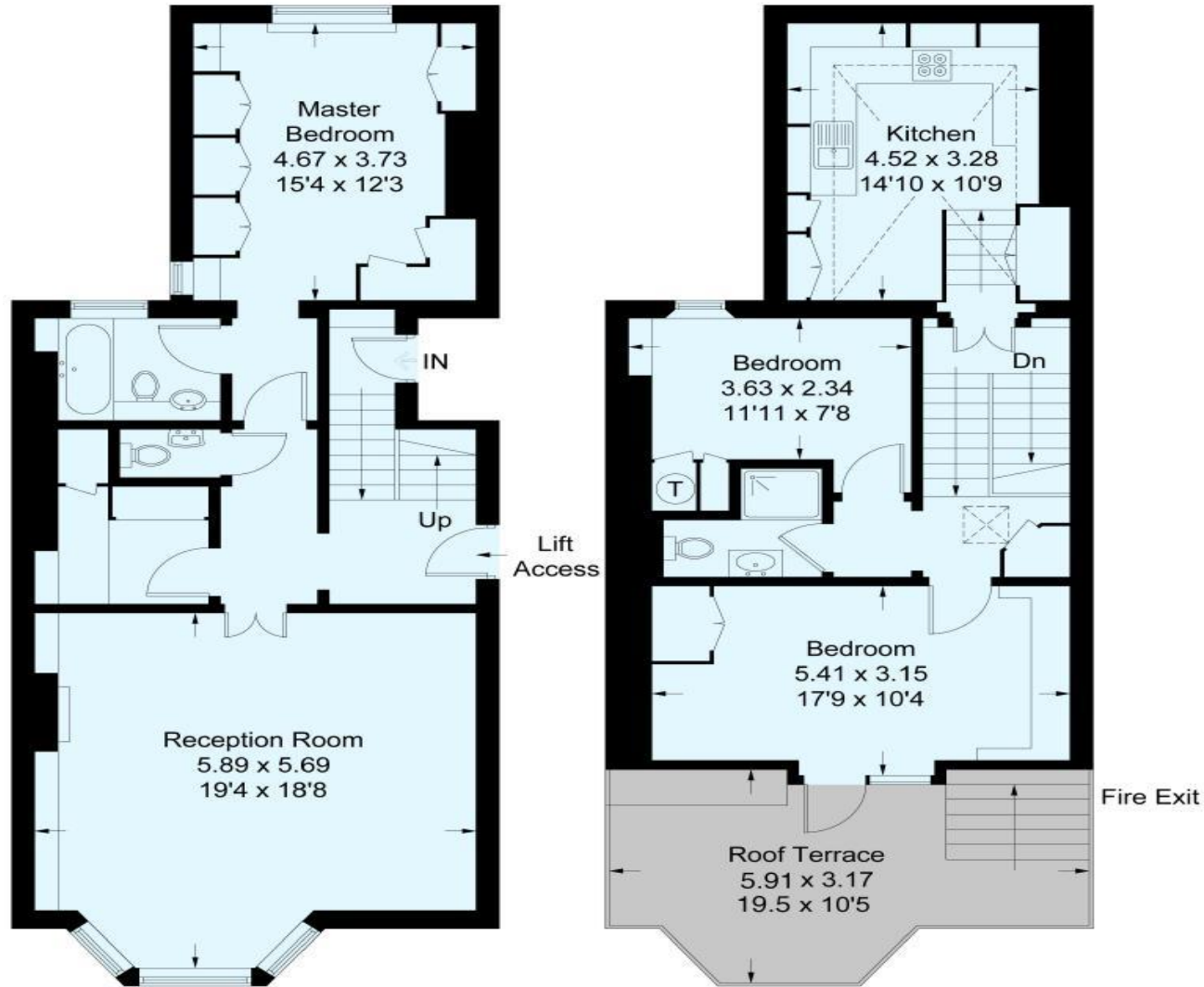


Additional Images



Tite Street, SW3

Approximate Gross Internal Area = 132.5 sq m / 1426 sq ft



Third Floor

Fourth Floor

This plan is for layout guidance only. Not drawn to scale unless stated. Windows and door openings are approximate. Whilst every care is taken in the preparation of this plan, please check all dimensions, shapes and compass bearings before making any decisions reliant upon them. (ID276778)

ASHDOWN MARKS
PROPERTY CONSULTANTS
9 Milner Street, London SW3 2QB
020 7589 3353
www.ashdownmarks.co.uk

Misrepresentation Act 1967. This brochure and the descriptions and measurements herein do not constitute representation and whilst every effort has been made to ensure accuracy this cannot be guaranteed.