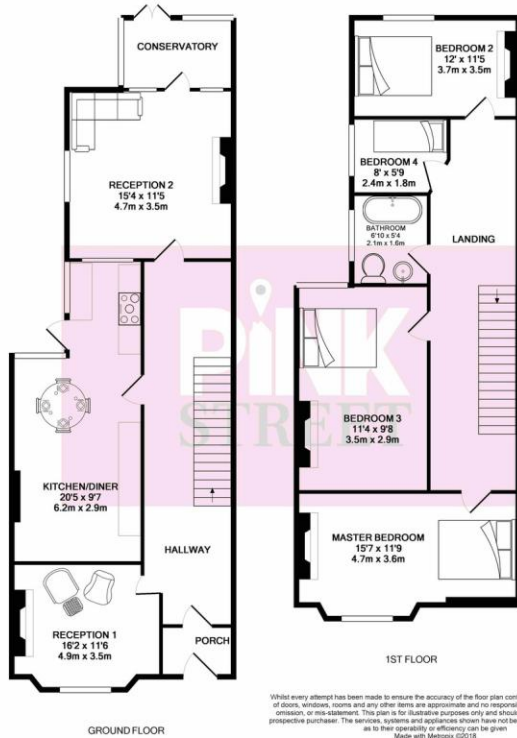




Stubbington Avenue, Portsmouth
£260,000

Estate Agents & Property Consultants

Property Sales | Lettings Management | Property Advice | Mortgage Broker



Whilst every attempt has been made to ensure the accuracy of the floor plan contained here, measurements of doors, windows, rooms and any other items are approximate and no responsibility is taken for any error, omission, or mis-statement. This plan is for illustrative purposes only and should be used as such by any prospective purchaser. The services, systems and appliances shown have not been tested and no guarantee as to their operability or efficiency can be given.
Made with Metropix ©2018

*** FOUR BEDROOMS *** TWO RECEPTIONS *** CHAIN FREE *** ATTENTION INVESTORS/DEVELOPERS ***

Pink Street are pleased to present this four bedroom mid terrace house on Stubbington Avenue, Portsmouth. The property comprises of two reception rooms, a large kitchen/diner, conservatory, four bedrooms, a bathroom and a good sized garden.

This property would make an exciting project, whether you're a developer/investor or are just looking for a home you can really make your own.

Contact Pink Street today to arrange a viewing! 02392 864 555.

RECEPTION ONE 16' 2" x 11' 6" (4.93m x 3.51m) Good sized reception room with a gas fireplace and original stained glass windows.

RECEPTION TWO 15' 4" x 11' 5" (4.67m x 3.48m) Another good sized reception with stunning stained glass windows and a gas fireplace. Door leading to;

CONSERVATORY 6' 9" x 6' 1" (2.06m x 1.85m) Great extra space. French doors leading to garden.

KITCHEN/DINER 20' 5" x 9' 7" (6.22m x 2.92m) Large kitchen/diner with lino flooring and access to

FOUR BEDROOMS
TWO RECEPTIONS
CHAIN FREE
ATTENTION
INVESTORS/DEVELOPER
S

DOUBLE BAY AND
FORECOURT

Notes