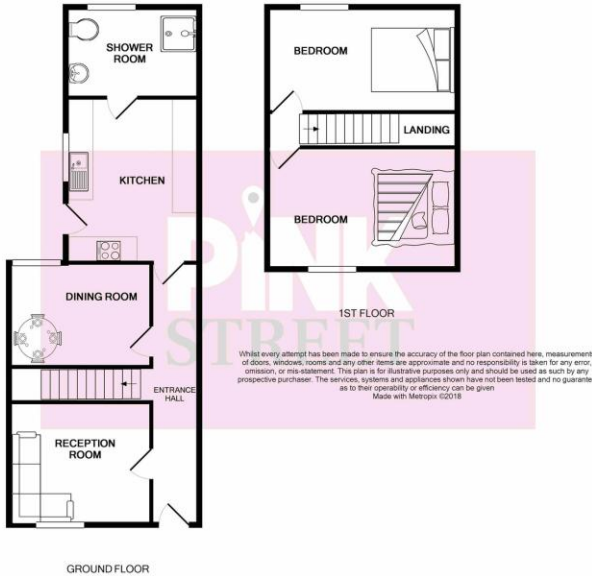


Croft Road, Portsmouth
£159,999

Get a Mortgage Quote from the Independent Experts. It's FREE!

Sell from 0.5% No Sale – No Commission
Nothing Upfront

Or ask about our LOCAL LETTING MANAGEMENT and TENANT FIND SERVICES



*** TWO DOUBLE BEDROOMS *** NO FORWARD CHAIN *** IDEAL FOR FIRST TIME BUYERS ***

Pink Street welcome to the market this two double bedroom house in Croft Road, Portsmouth. The property is being offered with no forward chain and comprises of two reception rooms and a downstairs bathroom. Ideal for first time buyers!

Call Pink Street on 02392 864555.

ENTRANCE HALL Leading straight into the :-

LOUNGE 12' 02" x 9' 76" (3.71m x 4.67m) Textured ceiling, double glazed window to the front aspect, radiator, stairs to the landing, through into the inner hallway.

INNER HALLWAY Textured ceiling, doors into :-

DINING ROOM 9' 72" max x 9' 03" (4.57m x 2.82m) Textured ceiling, storage cupboard, double glazed window to the side aspect, radiator.

KITCHEN 12' 17" x 7' 97" (4.09m x 4.6m) Textured ceiling, base units, stainless steel sink and drainer unit, double glazed window to the side aspect, space for cooker, washing machine, double glazed door to the side aspect.

BATHROOM Textured ceiling, obscure double glazed window to the rear aspect, shower cubicle, pedestal wash hand basin, low level w/c, towel radiator.

LANDING Loft access, doors into :-

BEDROOM ONE 12' 02" x 9' 76" (3.71m x 4.67m) Textured ceiling, double glazed window to the front aspect, radiator.

TWO DOUBLE
BEDROOMS
NO FORWARD CHAIN
TWO RECEPTION
ROOMS
GARDEN

CALL PINK STREET NOW
02392 864555

%epcGraph_c_1_309%

Notes

Get a Mortgage Quote from the Independent Experts. It's FREE!

Sell for 0.5%

No Sale – No Commission
Nothing Upfront

Or ask about our LOCAL LETTING MANAGEMENT and TENANT FIND SERVICES