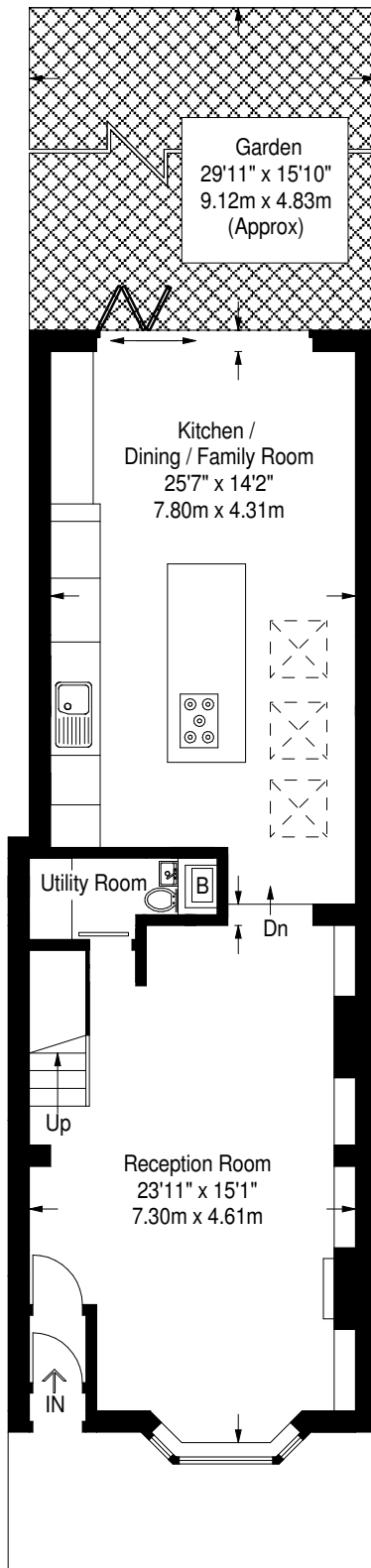
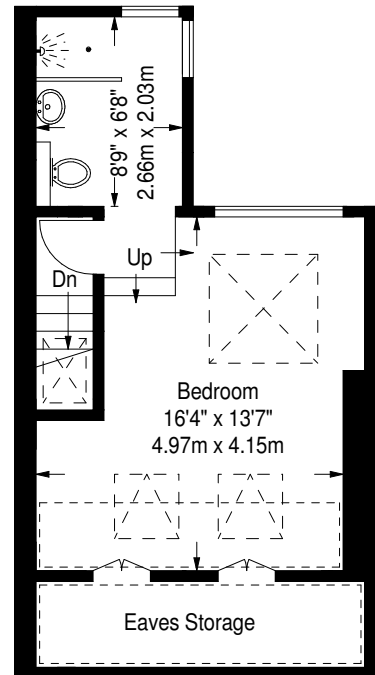


# Quick Road Chiswick W4 2BU

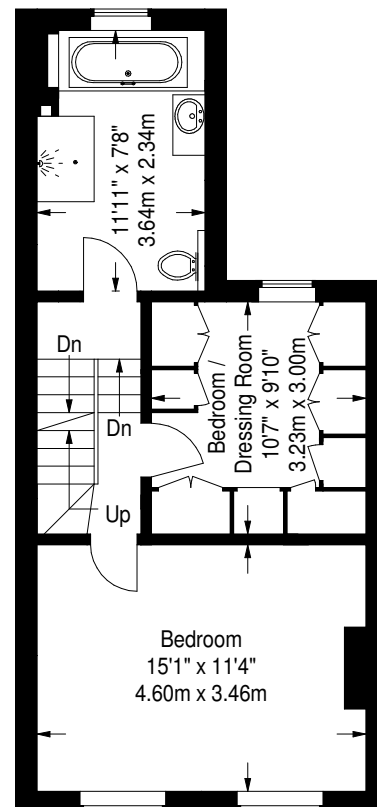
Approximate Gross Internal Area  
 Ground Floor = 67.6 sq m / 728 sq ft  
 First Floor = 40.4 sq m / 435 sq ft  
 Second Floor (Excluding Eaves Storage / Including Reduced Headroom)  
 28.5 sq m / 307 sq ft  
 Total = 136.5 sq m / 1470 sq ft



**Ground Floor**



**Second Floor**



**First Floor**

[Dashed line] = Reduced headroom below 1.5 m / 5'0"