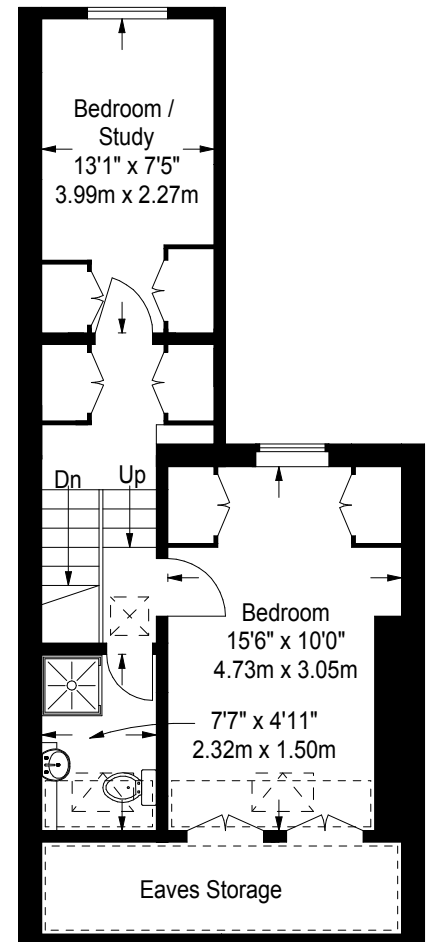
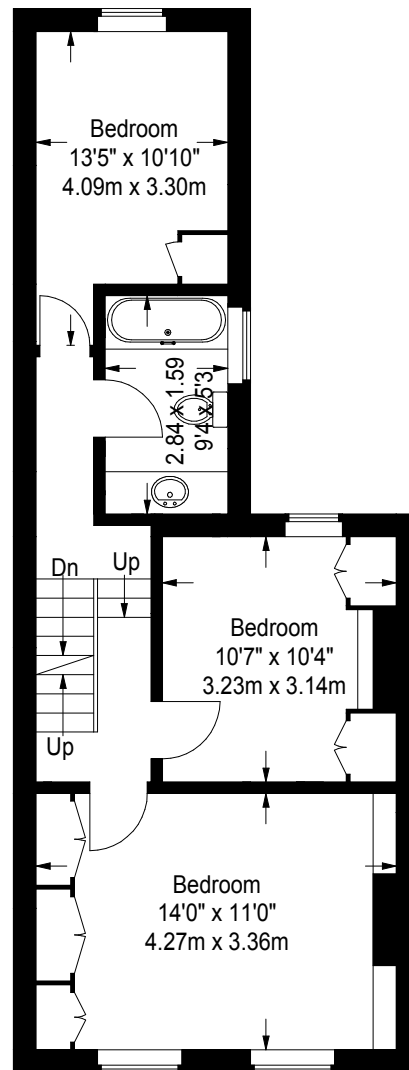
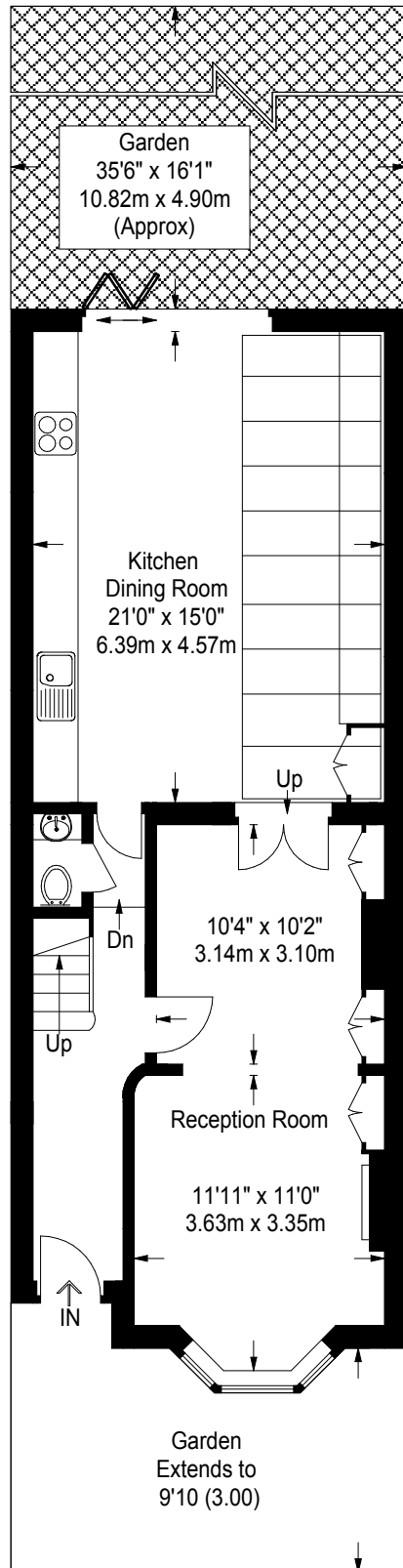


Quick Road, W4 2BU

Approximate Gross Internal Area
 Ground Floor = 63.3 sq m / 681 sq ft
 First Floor = 48 sq m / 517 sq ft
 Second Floor (Including Reduced Headroom /
 Eaves Storage) = 41.8 sq m / 450 sq ft
 Total = 153.1 sq m / 1648 sq ft



--- = Reduced headroom below 1.5 m / 5'0