

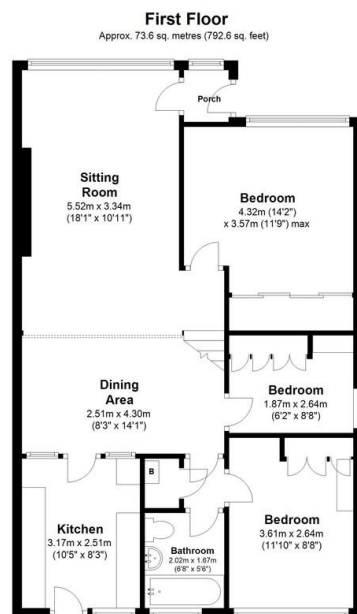
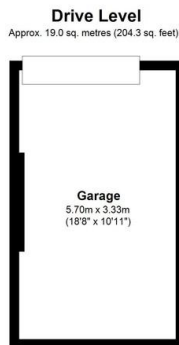
Asking Price Of **£200,000**

Rawdon, Leeds , LS19 6QL

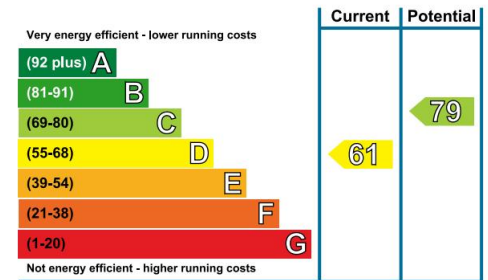
# Property Summary



A rare opportunity has arisen to purchase this 3 bed semi detached property in an excellent location on Rawdon's Town Street. The property is in need of modernisation and benefits from attractive gardens, a garage, and ample driveway parking. Sold with no onward chain.



Total area: approx. 92.6 sq. metres (996.9 sq. feet)  
Floor plans are for identification only. All measurements are approximate.  
Plan produced using PlanUp.



- Rare opportunity
- Excellent location
- In need of modernisation
- Garage
- Ample off street parking
- Gardens to front and rear
- Garage
- Lots of potential
- Recently fitted combi boiler
- Easy commute to Leeds, Bradford and beyond