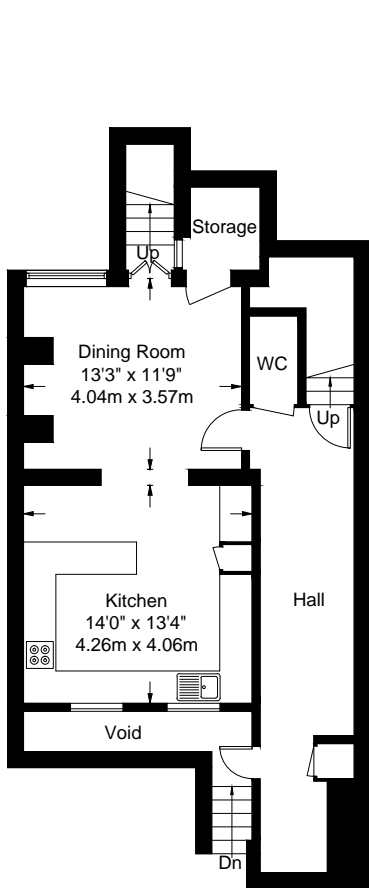
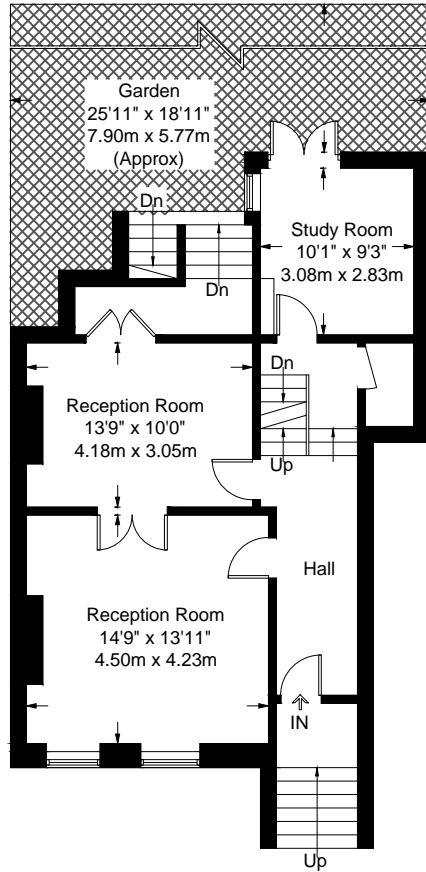


Heathfield Terrace W4 4JE

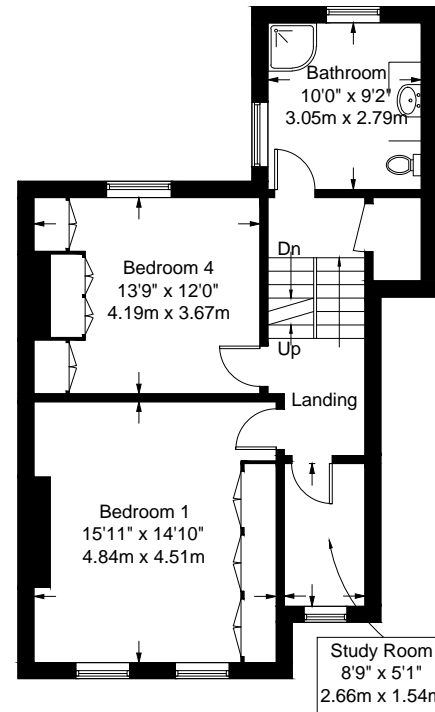
Approximate Gross Internal Area
 Lower Ground Floor = 60.0 sq m / 646 sq ft (Excluding Void)
 Ground Floor = 62.2 sq m / 669 sq ft
 First Floor = 62.0 sq m / 668 sq ft
 Second Floor = 43.8 sq m / 471 sq ft
 Total = 228.0 sq m / 2454 sq ft



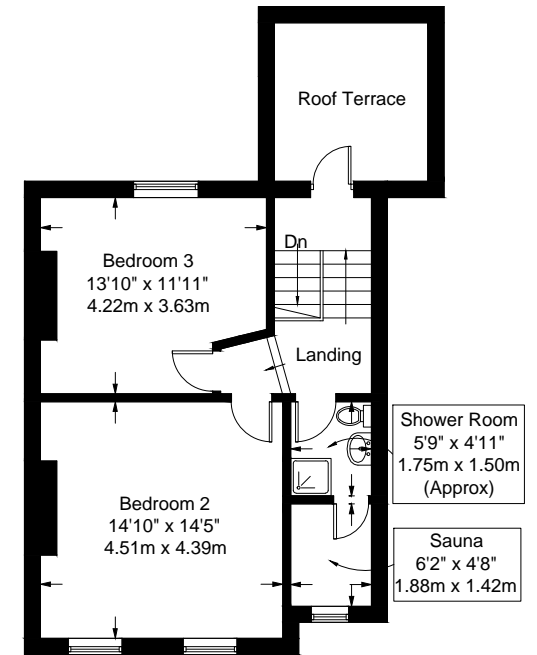
Lower Ground Floor



Ground Floor



First Floor



Second Floor