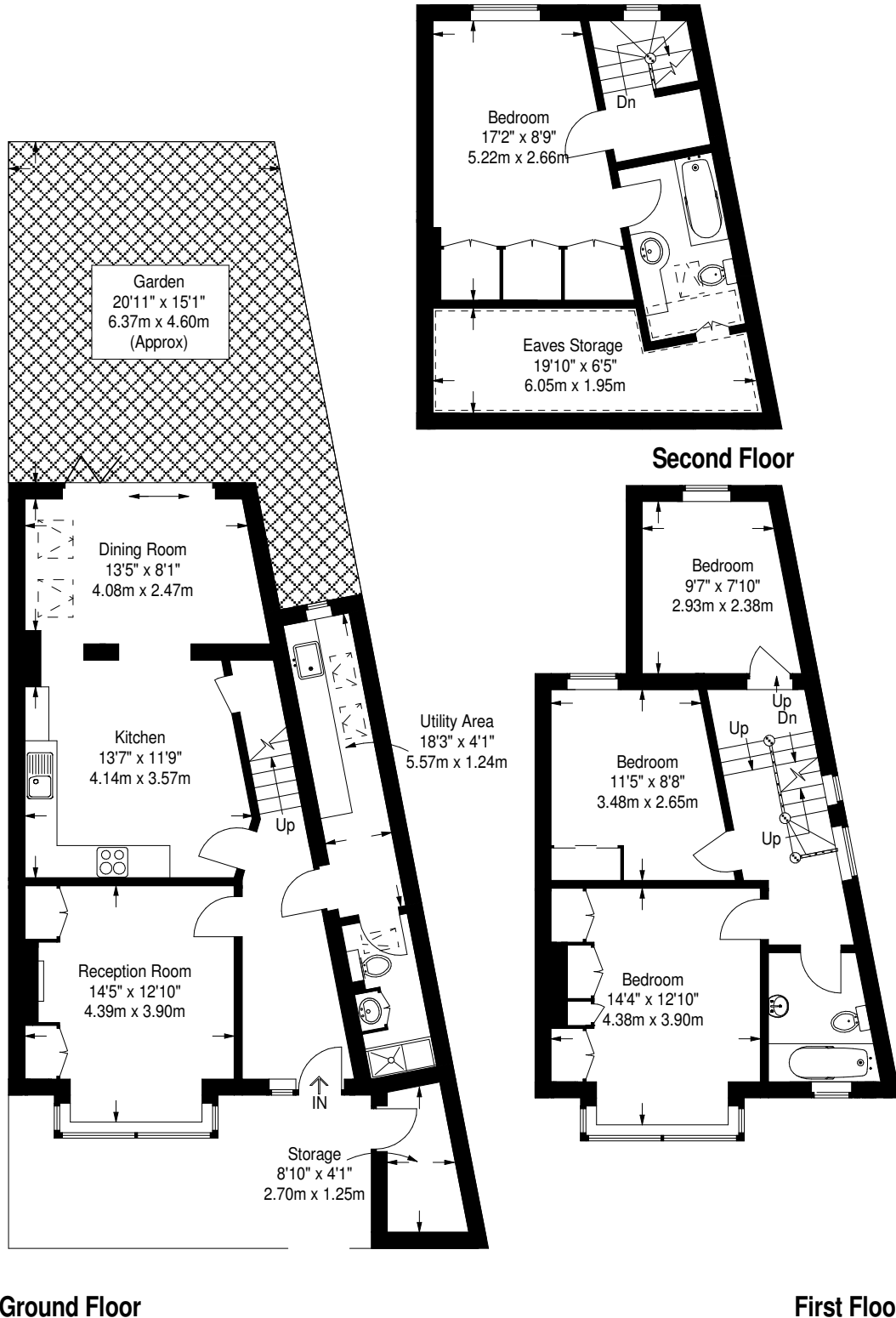


Graham Road W4 3DR

Approximate Gross Internal Area
 Ground Floor = 71 sq m / 764 sq ft
 First Floor = 51 sq m / 549 sq ft
 Second Floor = 28 sq m / 301 sq ft
 Total = 150 sq m / 1615 sq ft

Storage = 4 sq m / 43 sq ft
 Eaves Storage = 10 sq m / 108 sq ft



--- = Reduced headroom below 1.5 m / 5'0