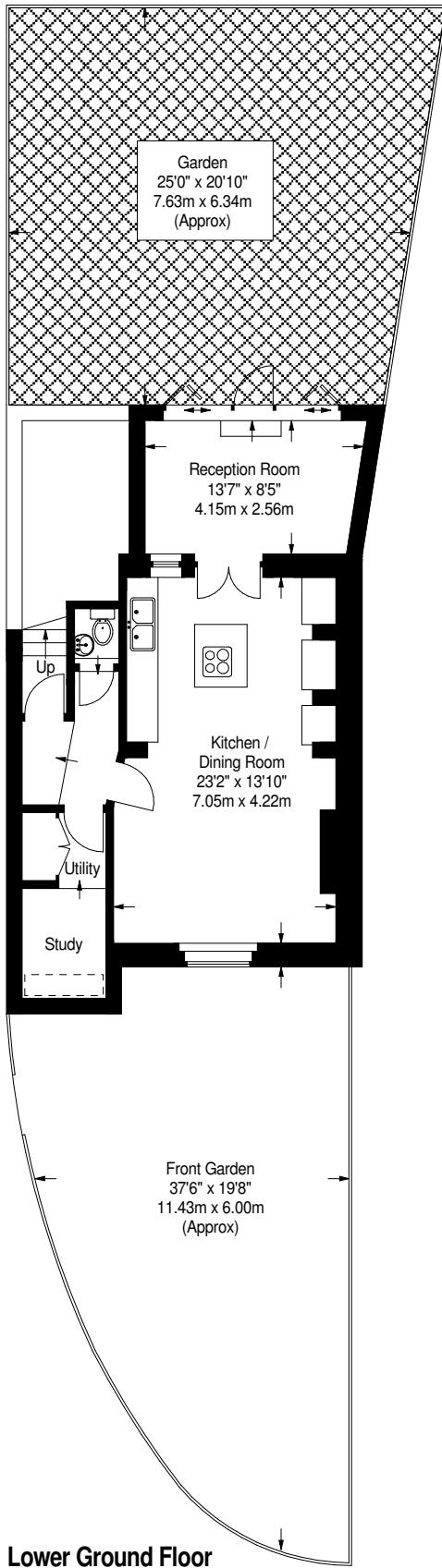
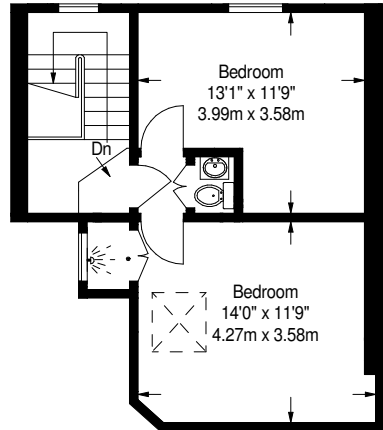


Heathfield Terrace, Chiswick W4 4JE

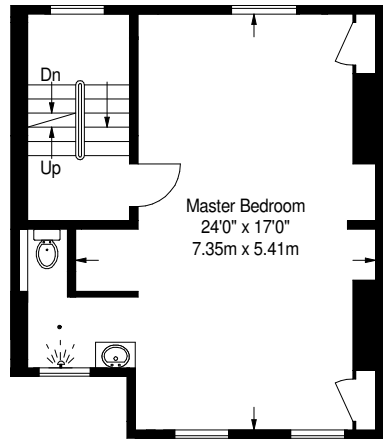
Approximate Gross Internal Area
 Lower Ground Floor (Including Reduced Headroom) = 54.8 sq m / 590 sq ft
 Raised Ground Floor = 55.2 sq m / 594 sq ft
 First Floor = 43.5 sq m / 468 sq ft
 Second Floor = 37.3 sq m / 402 sq ft
 Total = 190.8 sq m / 2054 sq ft



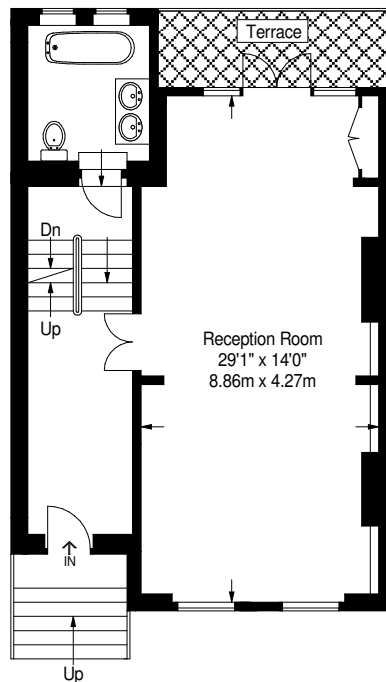
Lower Ground Floor



Second Floor



First Floor



Raised Ground Floor

= Reduced headroom below 1.5 m / 5'0"