

Geraldine Road Chiswick W4 3PA

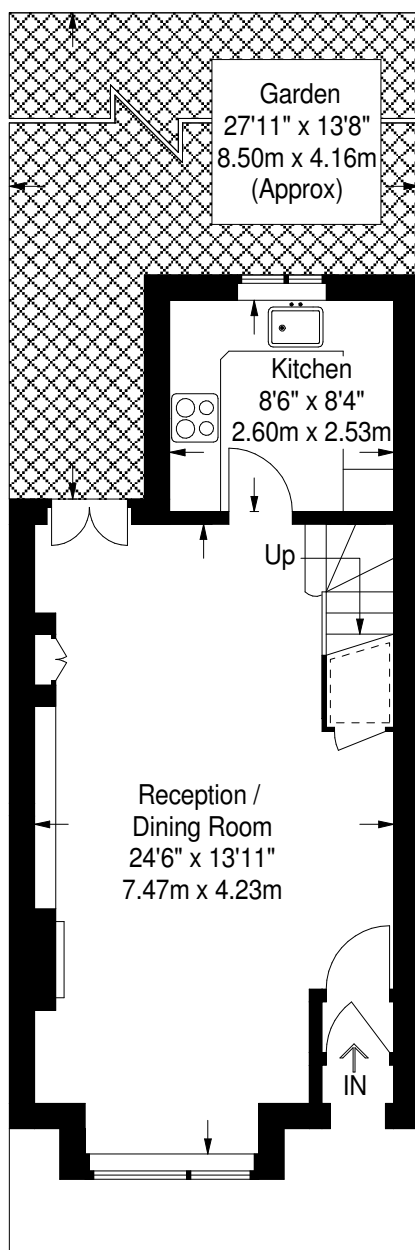
Approximate Gross Internal Area

Ground Floor (Including Reduced Headroom) = 37 sq m / 398 sq ft

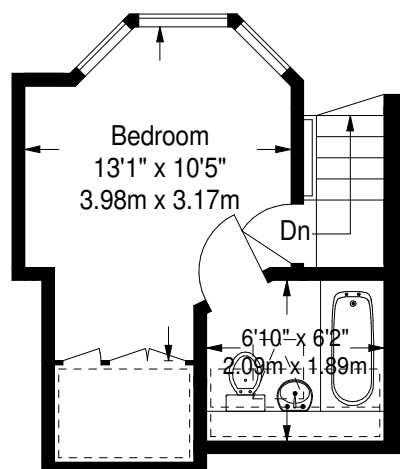
First Floor = 36.1 sq m / 388 sq ft

Second Floor (Including Reduced Headroom) = 18.5 sq m / 199 sq ft

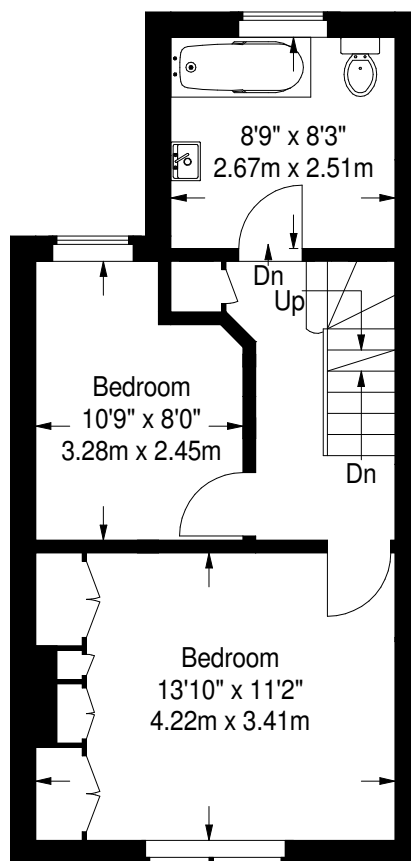
Total = 91.6 sq m / 985 sq ft



Ground Floor



Second Floor



First Floor

= Reduced headroom below 1.5 m / 5'0

Measured in accordance with RICS guidelines. To be used for identification and guidance purposes only. Not to scale.

© Photos Plans and EPCs | Tel: 07774 688 771 | info@photosplansandepcs.com | www.photosplansandepcs.com