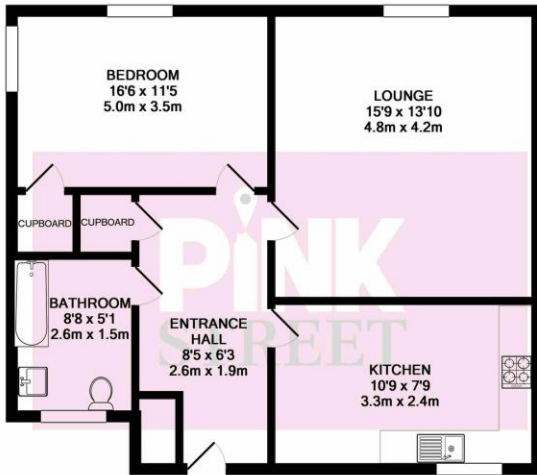




Hawke Street
£142,500

Estate Agents & Property Consultants

Property Sales | Lettings Management | Property Advice | Mortgage Broker



TOTAL APPROX. FLOOR AREA 852 SQ.FT. (79.1 SQ.M.)

Whilst every attempt has been made to ensure the accuracy of the floor plan contained here, measurements of doors, windows, rooms and any other items are approximate and no responsibility is taken for any error, omission, or mis-statement. This plan is for illustrative purposes only and should be used as such by any prospective purchaser. The services, systems and appliances shown have not been tested and no guarantee as to their operability or efficiency can be given
Made with Metropix ©2019

Modern, sleek and set in the heart of Gunwharf, this tasteful 1 bedroom flat is now available to view with Pink Street. With a statement grey gloss kitchen and a simplistic white and grey theme throughout it's perfect for a first time buy or an investor looking for a fantastic location and low maintenance property.

ENTRANCE HALL 8' 5" x 6' 3" (2.57m x 1.91m) Newly fitted carpet, smooth walls, two storage cupboards and radiator

BATHROOM 8' 8" x 5' 1" (2.64m x 1.55m) Newly fitted vinyl flooring, tiled walls and ceiling, Double glazed window to front, w.c, ceramic sink, bath with fitted shower overhead and radiator.

KITCHEN 10' 9" x 7' 9" (3.28m x 2.36m) double glazed window to front, newly fitted vinyl flooring, marble effect splash back tiles, newly fitted kitchen comprising of wall and base units, newly fitted wall mounted boiler with magna-flow filter, stainless steel sink and drainer, fitted cooker with four ring hobs and overhead extractor. Space for washing machine, separate space for fridge freezer.

BEDROOM 16' 6" x 11' 5" (5.03m x 3.48m) Newly fitted carpet, smooth walls. Double glazed window to rear and side and fitted cupboard.

LOUNGE 15' 9" x 13' 10" (4.8m x 4.22m) Newly fitted carpet, smooth walls and double glazed window to rear.

BIKE & STORAGE UNIT Your own separate ground floor fully lockable walk in bike/storage unit.

INVESTORS / FIRST TIME BUYERS
GREAT INVESTMENT OPPORTUNITY
OPPOSITE GUNWHARF QUAYS AND
GAS CENTRAL HEATING
VIEWS OF THE SPINNAKER TOWER

Notes