

Quick Road. Chiswick W4 2BU

Approximate Gross Internal Area


Ground Floor = 58.2 sq m / 626 sq ft

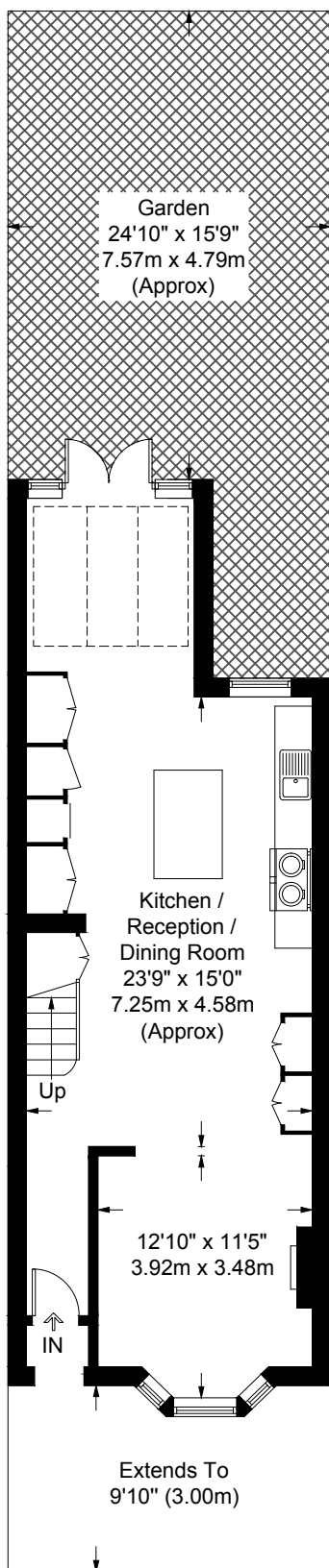
First Floor = 42.5 sq m / 457 sq ft

Second Floor (Including Reduced Headroom / Eaves Storage) = 26.2 sq m / 282 sq ft

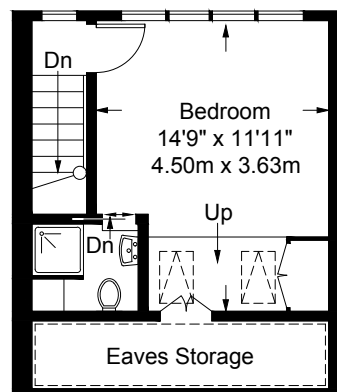
Total = 126.9 sq m / 1365 sq ft



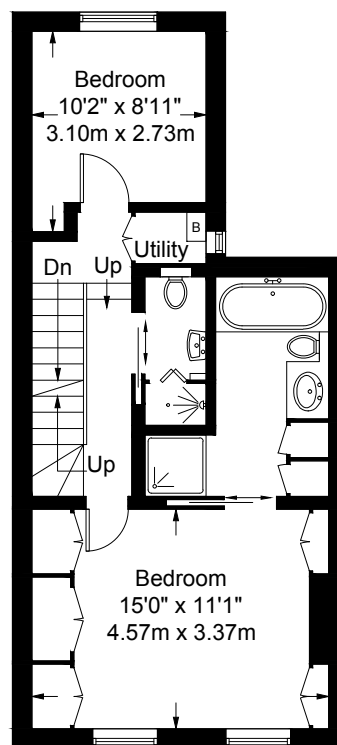
 = Reduced headroom below 1.5m / 5'0



Ground Floor



Second Floor



First Floor