

## Cranley Terrace, Holders Hill Drive

Hendon, NW4 1NQ



Asking Price: £1,250,000

- Detached Family Home
- 6 Bedrooms
- Substantial Living Accomodation
- Large Kitchen and Family Room
- Immaculate Condition
- Pretty Garden
- Parking For 3 Cars
- Sole Agent

# Full Description

---

HALLWAY

RECEPTION ROOM

27' 7" x 19' 3" (8.41m x 5.87m)

DINING ROOM

12' 4" x 8' 8" (3.76m x 2.64m)

KITCHEN

19' 5" x 8' 11" (5.92m x 2.72m)

WC

LANDING

BEDROOM 1

17' 11" x 11' 3" (5.46m x 3.43m)

BEDROOM 2

17' 11" x 10' 8" (5.46m x 3.25m)

BEDROOM 3

13' 1" x 9' 2" (3.99m x 2.79m)

BEDROOM 4

12' 5" x 8' 10" (3.78m x 2.69m)

BEDROOM 5

11' 6" x 8' 10" (3.51m x 2.69m)

BEDROOM 6

8' 8" x 6' 11" (2.64m x 2.11m)

BATHROOM

8' 8" x 6' 2" (2.64m x 1.88m)

ENSUITE

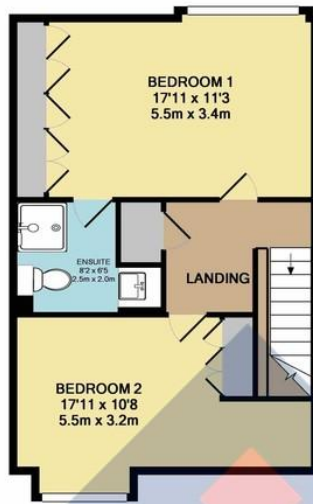
8' 2" x 6' 5" (2.49m x 1.96m)



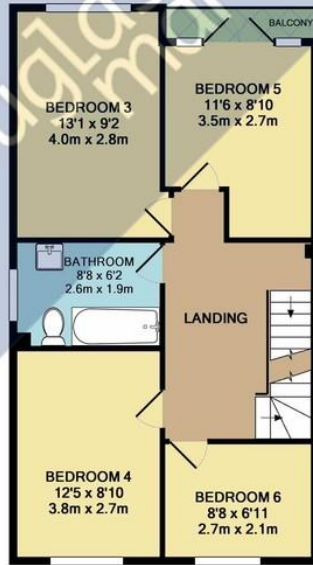




GROUND FLOOR  
APPROX. FLOOR  
AREA 900 SQ.FT.  
(83.6 SQ.M.)

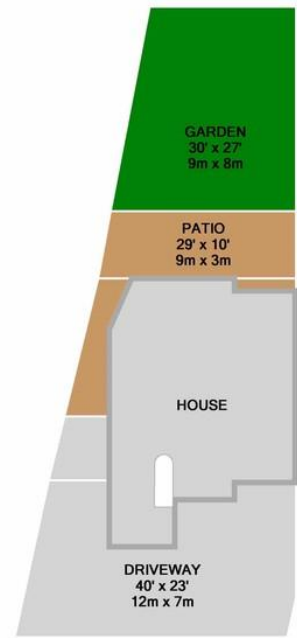


2ND FLOOR  
APPROX. FLOOR  
AREA 491 SQ.FT.  
(45.6 SQ.M.)

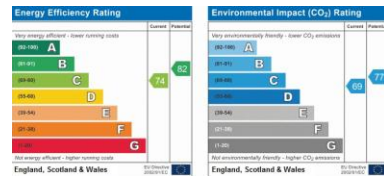


1ST FLOOR  
APPROX. FLOOR  
AREA 568 SQ.FT.  
(52.7 SQ.M.)

CRANLEY TERRACE NW4  
TOTAL APPROX. FLOOR AREA 1959 SQ.FT. (181.9 SQ.M.)  
Measurements are approximate. Not to scale. Illustrative purposes only



SITE PLAN



18 Central Circus  
London  
NW4 3AS

www.douglasmartin.co.uk  
sales@douglasmartin.co.uk  
020 8202 6333

Agents Note: Whilst every care has been taken to prepare these sales particulars, they are for guidance purposes only. All measurements are approximate are for general guidance purposes only and whilst every care has been taken to ensure their accuracy, they should not be relied upon and potential buyers are advised to recheck the measurements

