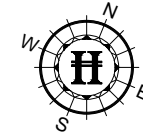
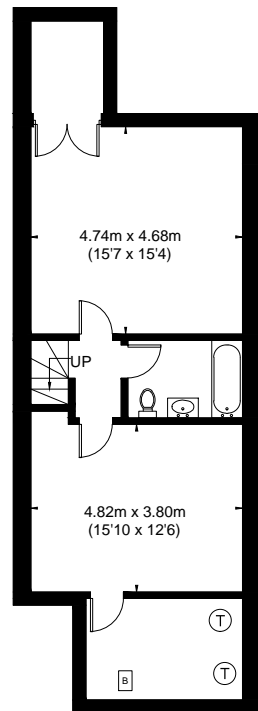


ALWYN AVENUE

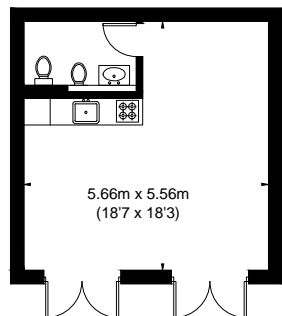


APPROXIMATE GROSS INTERNAL AREA
 BASEMENT = 638 SQ. FT. (59.3 SQ. M.)
 GROUND FLOOR = 1038 SQ. FT. (96.5 SQ. M.)
 FIRST FLOOR = 804 SQ. FT. (74.7 SQ. M.)
 SECOND FLOOR = 605 SQ. FT. (56.2 SQ. M.)
 OUTBUILDING = 336 SQ. FT. (31.2 SQ. M.)
 TOTAL = 3421 SQ. FT. (317.9 SQ. M.)

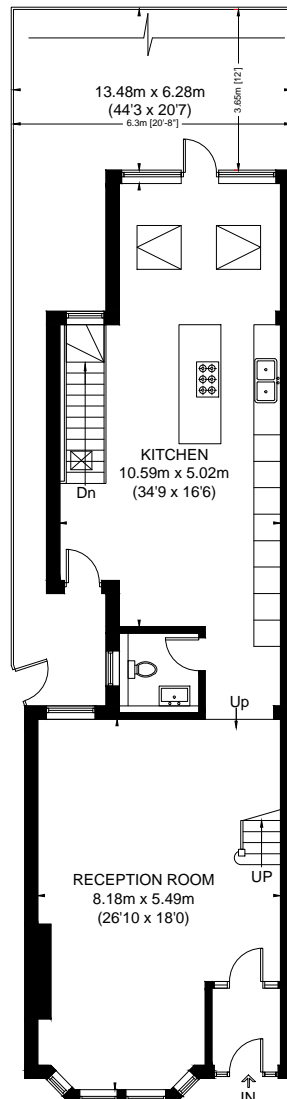
This plan is for layout guidance only. Not drawn to scale unless stated. Windows and door openings are approximate. Whilst every care is taken in the preparation of this plan, please check all dimensions, shapes and compass bearings before making any decisions reliant upon them. Please be advised that Hamptons International / our agents have not seen or reviewed any building regulations or planning permission in relation to works carried out to the property (Ref: 197662)



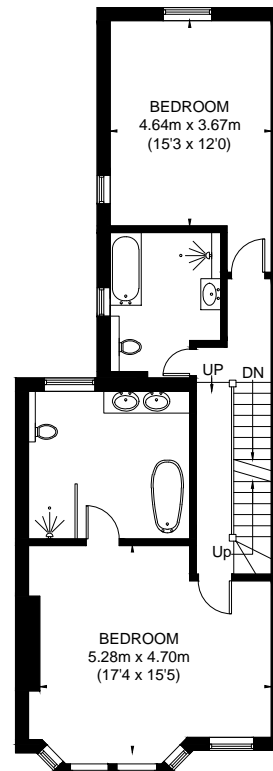
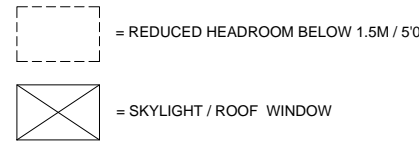
BASEMENT



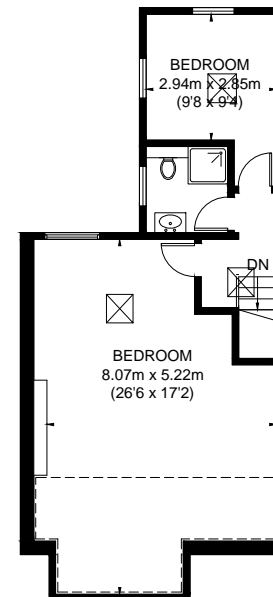
OUTBUILDING
 (Not Shown In Actual Location / Orientation)



GROUND FLOOR



FIRST FLOOR



SECOND FLOOR