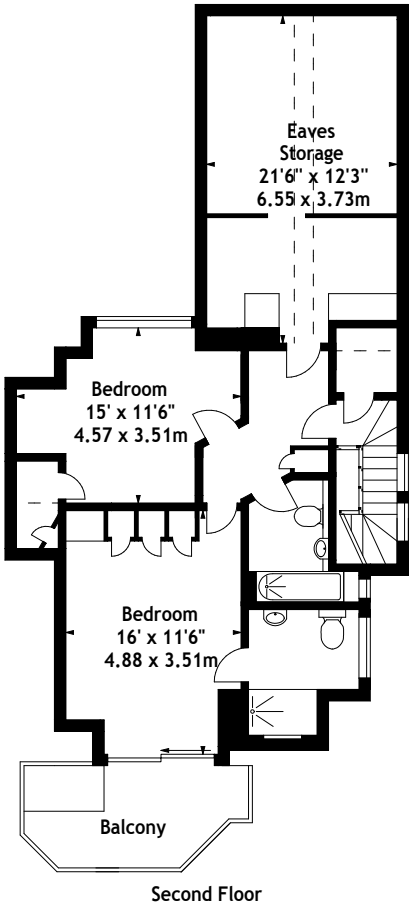
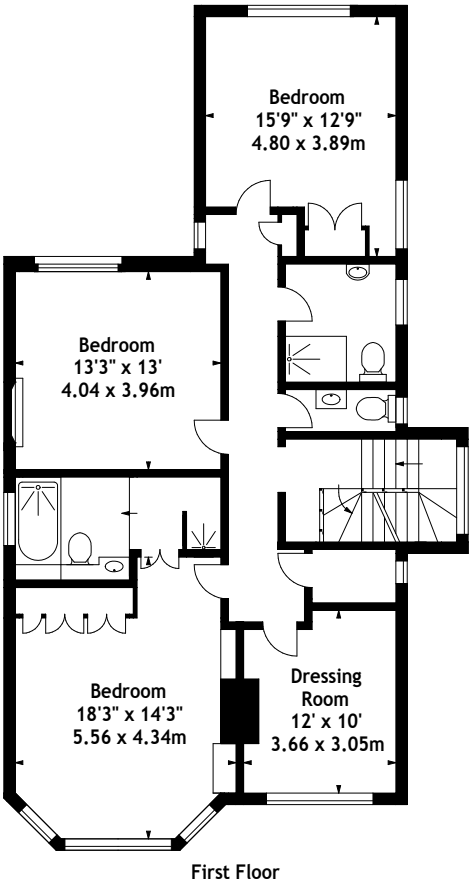
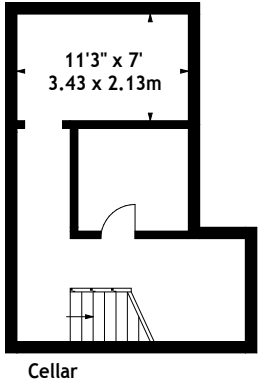


Sutton Court Road, W4
 Approx. Gross Internal Area
 3706 Sq Ft - 344.29 Sq M
 (Including Eaves Storage)



Measured in accordance with RICS guidelines. Every attempt is made to ensure accuracy, however all measurements are approximate. This floor plan is for illustrative purposes only and is not to scale.
 © Datagraphy Ltd 2017
 Photographs * Floorplans * Virtual Tours
 Tel: 0845 643 4401 www.datagraphy.com