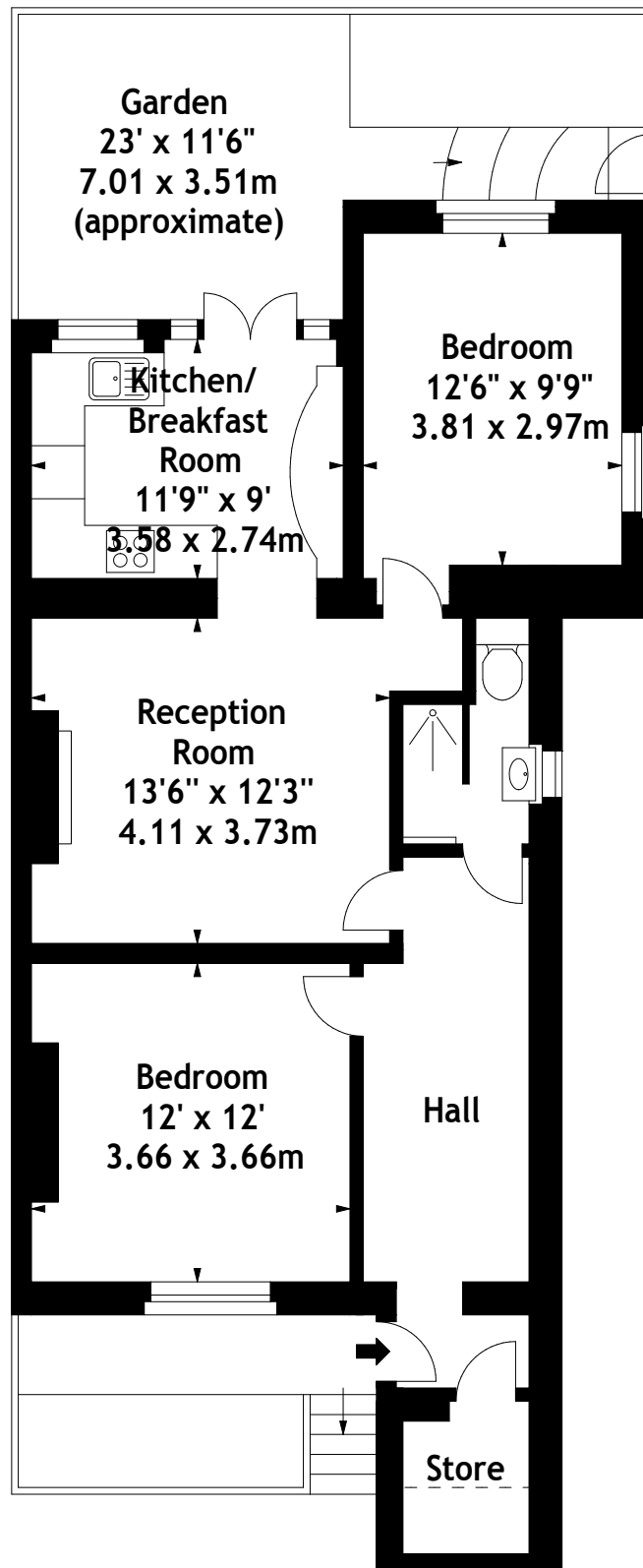


Oxford Road North,  
Chiswick, W4  
Approx. Gross Internal Area  
782 Sq Ft - 72.65 Sq M  
(Including Store)



**Lower Ground Floor**

Measured in accordance with RICS guidelines. Every attempt is made to ensure accuracy, however all measurements are approximate. This floor plan is for illustrative purposes only and is not to scale.  
© Datagraphy Ltd 2017  
Photographs \* Floorplans \* Virtual Tours  
Tel: 0845 643 4401 [www.datagraphy.com](http://www.datagraphy.com)