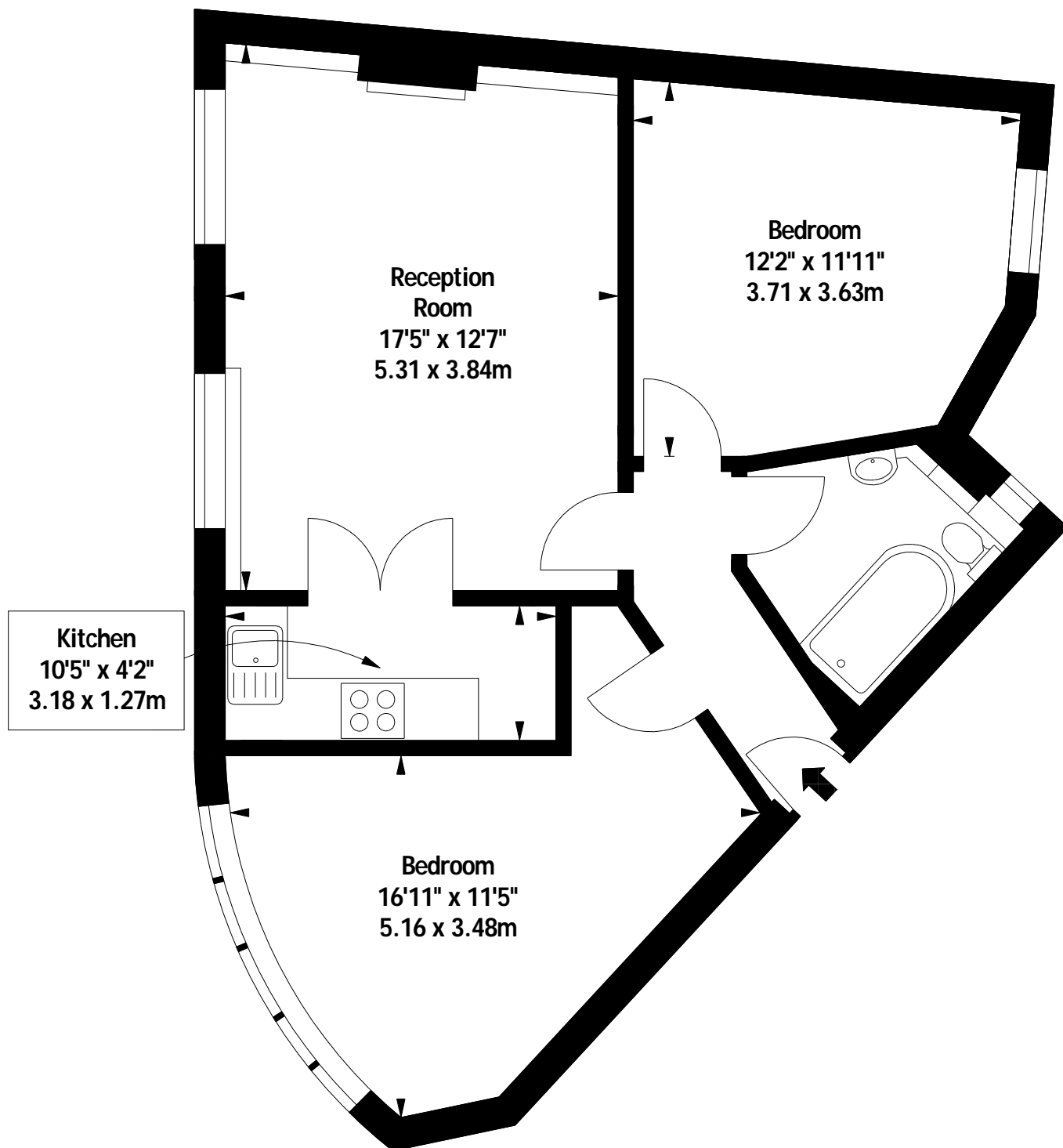


Chiswick High Road, Chiswick, London, W4

Approx. Gross Internal Area

643 Sq Ft - 59.7 Sq M



First Floor

Measured in accordance with RICS guidelines. Every attempt is made to ensure accuracy, however all measurements are approximate. This floor plan is for illustrative purposes only and is not to scale.

© Datagraphy Ltd 2018