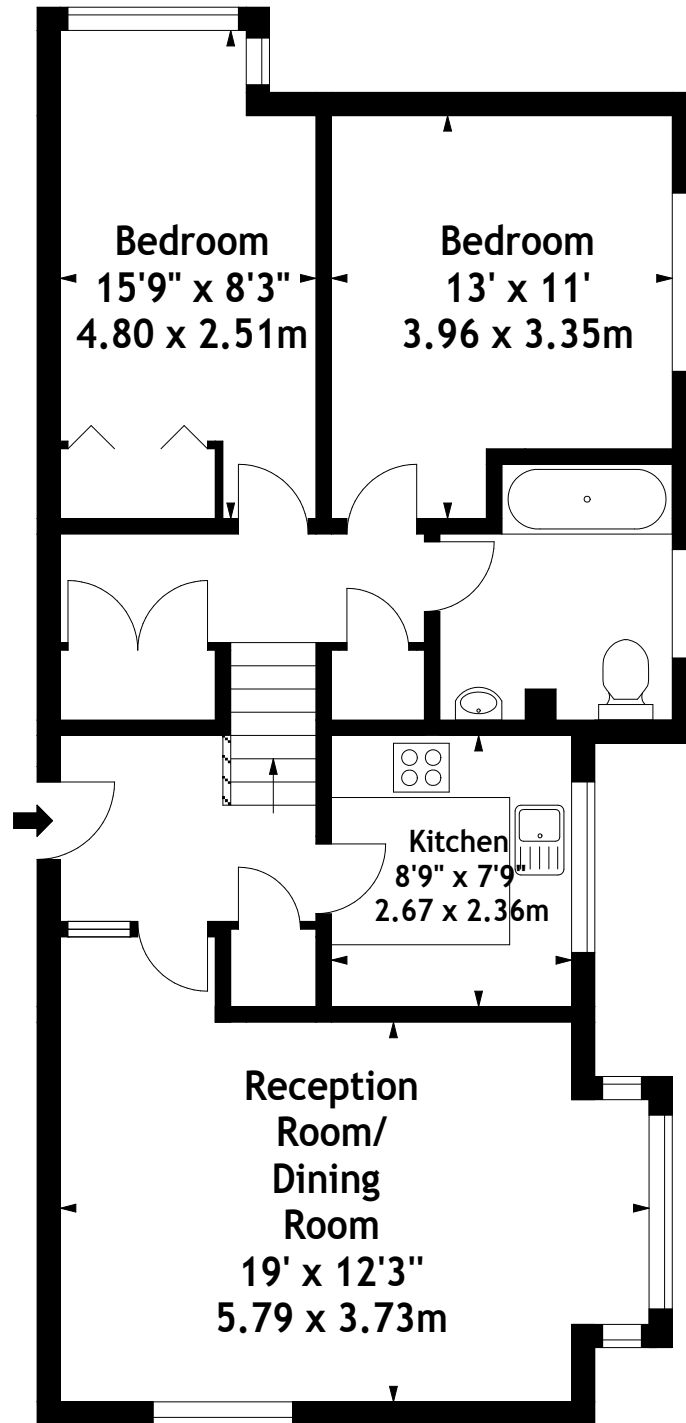


St. James's Court,
Marlborough Crescent, W4
Approx. Gross Internal Area
783 Sq Ft - 72.74 Sq M



Ground Floor



Measured in accordance with RICS guidelines. Every attempt is made to ensure accuracy, however all measurements are approximate. This floor plan is for illustrative purposes only and is not to scale.

© Datography Ltd 2017

Photographs * Floorplans * Virtual Tours
Tel: 0845 643 4401 www.datography.com