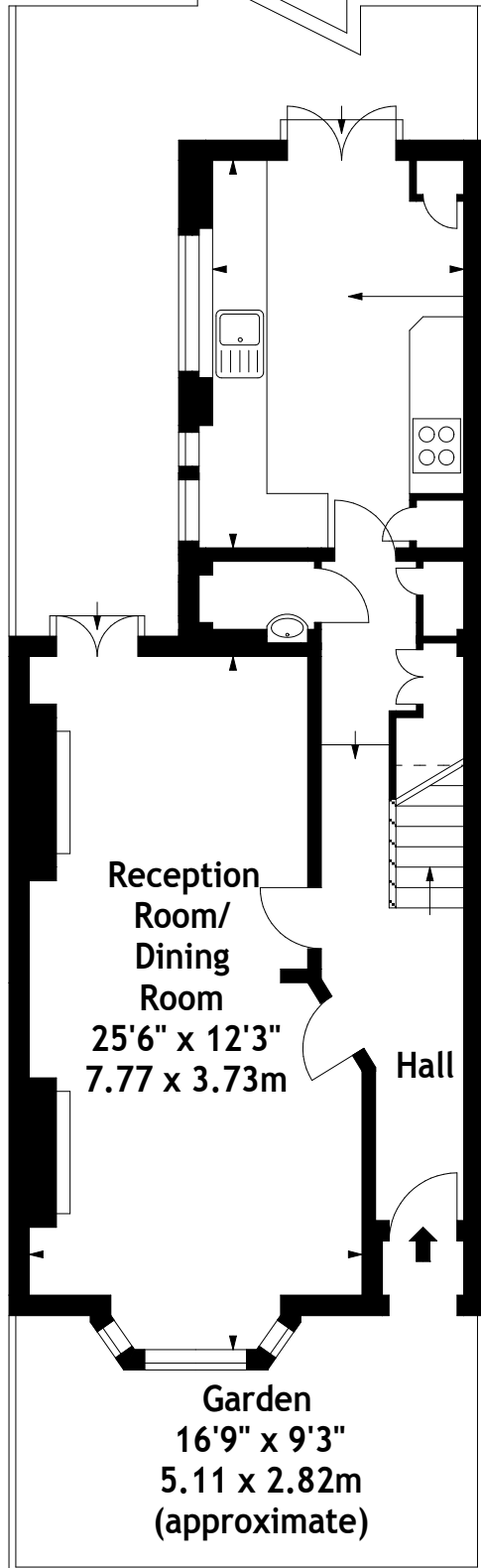


Hazledene Road , W4  
Approx. Gross Internal Area  
1400 Sq Ft - 130.06 Sq M



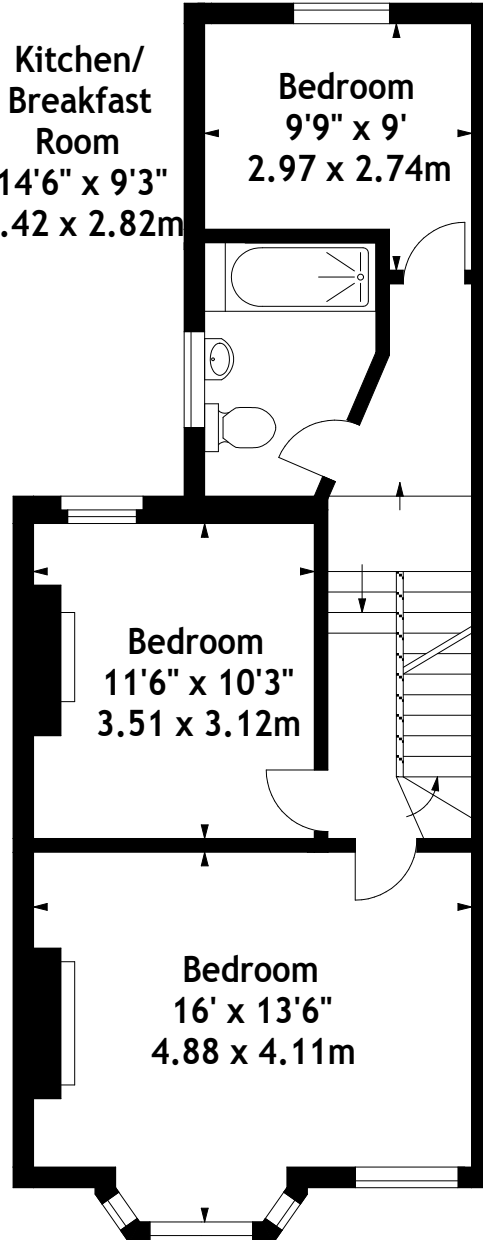
Garden  
27'9" x 17'9"  
8.46 x 5.41m  
(approximate)



Ground Floor

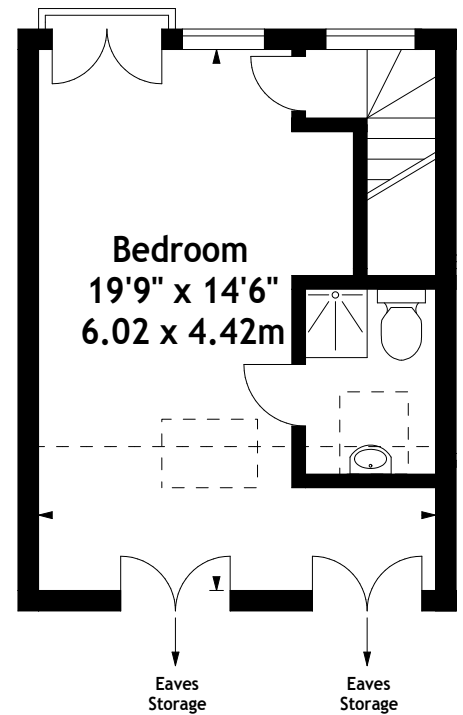
Kitchen/  
Breakfast  
Room  
14'6" x 9'3"  
4.42 x 2.82m

Bedroom  
9'9" x 9'  
2.97 x 2.74m



First Floor

Bedroom  
19'9" x 14'6"  
6.02 x 4.42m



Second Floor

Measured in accordance with RICS guidelines. Every attempt is made to ensure accuracy, however all measurements are approximate. This floor plan is for illustrative purposes only and is not to scale.

© Datagraphy Ltd 2017

Photographs \* Floorplans \* Virtual Tours  
Tel: 0845 643 4401 [www.datagraphy.com](http://www.datagraphy.com)

**WHITMAN & CO.**  
SALES • LETTINGS • COMMERCIAL